

# SPECIFICATIONS

## Low Water Pressure Booster Pump Kit Model PB001

### GENERAL

Compact pressure boosting diaphragm pump kit designed to work with Elkay and Halsey Taylor fountains and coolers. Integrated pressure sensing switch automatically activates pump during water fountain or bottle filler use. Pump and components are certified to NSF 61.

### STANDARD FEATURES

- Can run dry without damage
- Self priming up to 8 vertical feet (2.4m)
- Built in check valve prevents backflow
- Integrated pressure sensing switch automatically turns pump on and off
- Operates on 115 V / 60 Hz, 0.7 max Amps
- 81 Watts
- 3 prong Type B plug pattern

### INCLUDED WITH KIT

- Pressure boosting diaphragm pump
- (2) 3/8" Quick-Connect / NPT tube fittings
- (4) Sheet metal screws for mounting
- 2ft long 3/8" diameter poly tubing

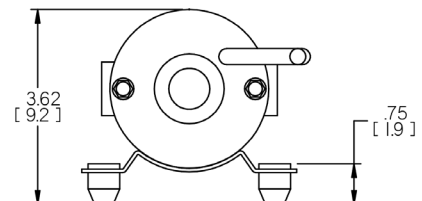
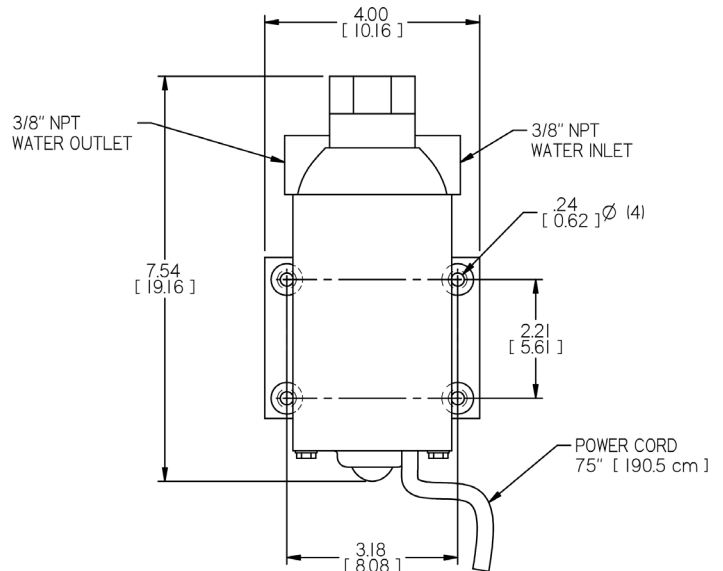
### INSTALLATION INSTRUCTIONS

1. Shut off water flow to cooler and disconnect electrical power
2. Install (2) 3/8" Quick-Connect tube fittings (provided) in water inlet and water outlet of pump. Do not over tighten, maximum torque is 3.7 ft. lbs [5 Nm].
3. Mount pump in desired location. Must be within 2 ft (61cm) of cooler water inlet. If mounting pump to materials other than sheet metal, use appropriate mounting hardware.
4. Make required plumbing connections. Install 3/8" poly tubing between pump water outlet and cooler water inlet. Connect pump to building supply line with a shut off valve. NOTE: Do not solder copper tubes inserted into Quick-Connect fittings as this may cause damage to o-ring seals.
5. Make electrical connections. Verify that power supply is identical in voltage, cycle, and phase to that specified on pump serial plate.
6. Read pump owners manual for more information.

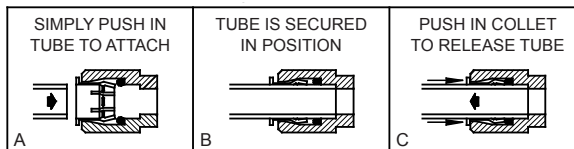
### STANDARDS AND CERTIFICATIONS

- NSF Listed
- UL Listed

## Model PB001



### OPERATION OF QUICK CONNECT FITTINGS



PUSHING TUBE IN BEFORE PULLING IT OUT HELPS TO RELEASE TUBE

Job Name: _____
Model: _____ Qty. _____
Contact: _____
Approval Signature: _____
Notes: _____

Note: Continued product improvement makes specification subject to change without notice.