

# ELKAY®

## SPECIFICATIONS

### No Lead Wall Mount Fully-Recessed Water Cooler with Cup Filler, Dispenser and Waste Receptacle, Filtered Model LJNEM102QCDK

#### GENERAL

Fully recessed cup dispenser-disposer with cup filler and integral drain. Cup dispenser holds (100) cups, 4 oz. (118 mL) each. Access door has cylinder locks. Cup dispenser contains removable receptacle for discarded cups behind self-closing door and locked access door.

Wall type, fully recessed, electric refrigerated water cooler with stainless steel louvered ventilating grill. Includes WaterSentry® Plus 1500-gallon capacity filtration system certified to NSF/ANSI 42 & 53 (Lead, Class 1 Particulate, Chlorine, Taste and Odor)

Fountain has contoured basin to minimize splashing. Includes Vandal-resistant bubbler and easy to operate, vandal-resistant front push button. Flow regulator provides constant stream from 20 to 105 psi (0.14 to 0.72 MPa).

Energy efficient refrigeration system utilizes a hermetically sealed tube-tank type evaporator, refrigerant drier, and capillary tube.

#### NO LEAD DESIGN

These water coolers are certified to be lead-free as defined by the Safe Drinking Water Act. Elkay water coolers are manufactured with a waterway system utilizing completely lead-free material. These waterways have no lead because all lead materials, such as leaded brass, have been removed. All joints are brazed using silver solder only. No lead solder is permitted.

#### STANDARD FEATURES

- Heavy-duty vandal-resistant bubbler
- 2 gallon (7.6 liter) Reservoir – Stainless Steel 316L
- 20 to 105 psi (0.14 to 0.72 MPa) water pressure
- 10 GPH (37.9 LPH) at 240VAC/50Hz\*
- 240 Volt nominal rating
- Vandal-resistant, chrome brass front push button
- WaterSentry® Plus 1500-gallon capacity filtration system certified to NSF/ANSI 42 & 53 (Lead, Class 1 Particulate, Chlorine, Taste and Odor)

*\*Based on 80°F (26.7°C) inlet water and 90°F (32.2°C) ambient air temperature for 50°F (10°C) chilled drinking water*

#### COOLING SYSTEM

**Motor Compressor:** Hermetically sealed, reciprocating type 1/3 HP, 240V/50Hz single phase. Sealed-in lifetime oil supply.

**Condenser:** Fan cooled, copper tube with aluminum fins. Fan motor is permanently lubricated.

**Cooling Unit:** 2 gallon (7.6 liter) water storage capacity. Combination tube-tank type. Self cleansing. Type 316L Stainless Steel

**Temperature Control:** Enclosed adjustable thermostat is factory preset. Requires no adjustment other than for altitude requirements.

**Refrigerant Control:** Refrigerant HFC-134a is controlled by accurately calibrated capillary tube for positively trouble-free performance.



Model LJNEM102QCDK

#### CONSTRUCTION

**Cup Dispenser-Disposer:** #16 gauge, stainless steel designed to fit along side of fully recessed water cooler. Access doors with key locks are flush with front surface of frame.

**Fountain Top:** #16 gauge, type one piece stainless steel. Anti-splash design has exclusive Cascade basin, tested most splash-resistant. Exposed surfaces polished to a uniform Elkay luster finish.

**Vandal-Resistant Bubbler:** Heavy-duty, one-piece construction. Meets UL requirements and all sanitary codes.

**Removable Front Ventilating Grill:** #16 gauge type stainless steel, polished to a uniform Elkay finish.

**Wall Mounting Frame:** Mounting frame furnished with each unit. Frame allows for flush mounting to finished wall. Frame includes mounting shelf for self contained water chiller.

**Protected by Elkay's 5 Year Limited Warranty** on the refrigeration system of the unit. Electrical components and water system are warranted for 12 months from date of installation (parts only). Warranty pertains to drinking water applications only. Non-drinking water applications are not covered under warranty.

Elkay Pressure-Type Water Coolers are designed to operate on 20 to 105 psi (0.14 to 0.72 MPa) supply line pressure. If inlet pressure is above 105 psi (0.72 MPa), a pressure regulator must be installed in the supply line. Any damage caused by reason of connecting this product to supply line pressures lower than 20 psi (0.14 MPa) or higher than 105 psi (0.72 MPa) is not covered by the warranty.

#### CERTIFICATIONS AND STANDARDS

- Complies with UL399 & CSA C22.2 no. 120 Standards
- NSF/ANSI 42 & 53 (Drinking Water Treatments)



*This specification describes an Elkay product with design, quality and functional benefits to the user. When making a comparison of other producer's offerings, be certain these features are not overlooked.*

# No Lead Wall Mount Fully-Recessed Water Cooler with Cup Filler, Dispenser and Waste Receptacle, Filtered Model LJNEM102QCDK

# ELKAY® ROUGH-IN DIMENSIONS

## IMPORTANT! INSTALLER PLEASE NOTE:

The grounding of electrical equipment such as telephone, computers, etc., to water lines is a common procedure. This grounding may be in the building or may occur away from the building. This grounding can cause electrical feedback into a water cooler, creating an electrolysis which creates a metallic taste or causes an increase in the metal content of the water. This condition is avoidable by using the proper materials as indicated below.

The drain fittings which are provided by the installer should also be plastic to electrically isolate the cooler from the building plumbing system.

## MFRQ MOUNTING FRAME INSTRUCTIONS

Cut a rectangular wall opening 25-1/8" W x 53-1/2" H, 11-3/8" above the floor line. Inside of this opening add (1) 1-1/2" stud to make two openings: (1) 17-3/8" W x 53-1/2" H on the left hand side and (1) 6-1/4" W x 53-1/2" H on the right hand side. Refer to rough in drawing for metric dimensions. The support frame is to be installed first. Place the frame into the wall opening, and secure to wall opening using (14) screws provided by installer. Hang basin to hanger on frame and attach basin bottom to wall frame using included hardware. Place chiller on lower shelf. Assemble water service line, waste line, and electrical as required. After assembly, check for leaks and correct functions of fountain and chiller. The louvered bottom panel is attached last. (For details see the installation instructions.)

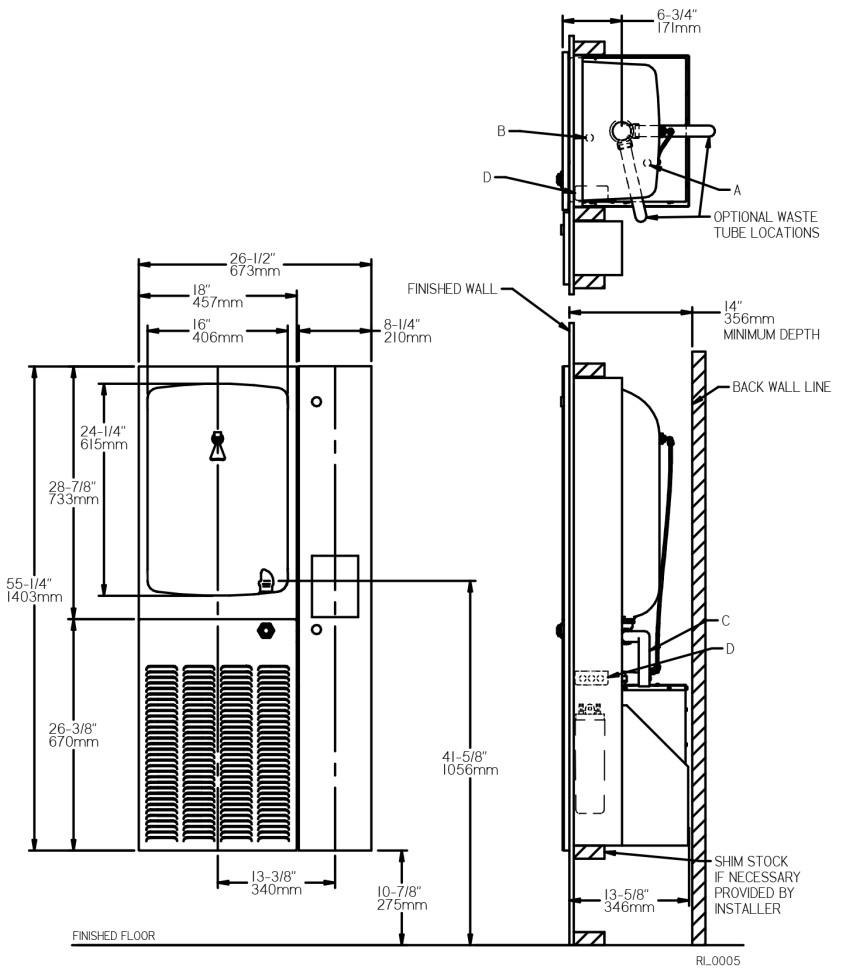
Installation requires trap to be installed in wall.  
Trap and service stop not included.

Operating Pressures between 20 and 105 psi (0.14 and 0.72 MPa).

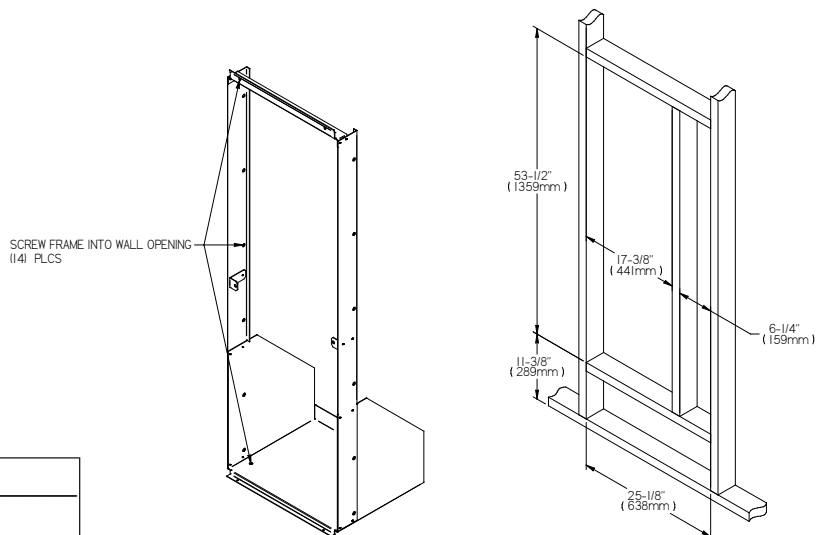
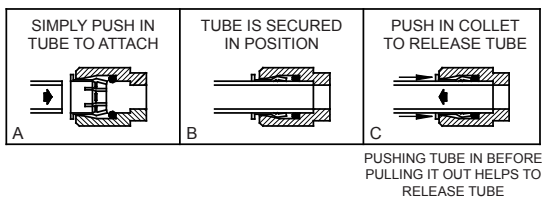
## MOUNTING INSTRUCTIONS FOR CUP DISPENSER

Open door of cup dispenser and remove waste bin. Use a straight edge to align top and bottom surface of cup dispenser with unit previously installed on the left hand side. Secure cup dispenser to wall with appropriate fasteners.

See installation manual for more information.



## OPERATION OF QUICK CONNECT FITTINGS



## LEGEND

- A = 3/8" O.D. TUBE CONNECT (CHILLER WATER OUTLET)
- B = 3/8" O.D. TUBE CONNECT (CHILLER WATER INLET) SHUT OFF VALVE BY OTHERS
- C = 1-1/4" O.D. WASTE WATER OUTLET TUBE (TRAP NOT FURNISHED)
- D = ELECTRICAL INLET

Job Name:	_____
Model:	_____ Qty. _____
Contact:	_____
Approval Signature:	_____
Notes:	_____