

ELKAY®

SPECIFICATIONS

No Lead Wall Mount Fully-Recessed Water Cooler with Cup Filler, Dispenser and Waste Receptacle Model EFRCM82QCDK

**RATED FOR INDOOR USE ONLY
ONLY AVAILABLE FOR QATAR**



PRODUCT SPECIFICATION

Wall type, fully recessed, electric refrigerated water cooler with stainless steel louvered ventilating grill. Fully recessed cup dispenser-disposer with push back type cup filler and integral drain.

Unit furnished with hermetically sealed tube-tank cooler unit in undersection. Cooling unit removable without disturbing electrical or drain connections. Condenser, air cooled by fan. Plumbing and electrical connections are concealed. Entire unit does not extend more than 1/2" from wall surface. Flexi-Guard® Safety bubbler. Control push button located on front panel below stream projector has in-line flow regulator from 20 to 105 psi water pressure. Unit shall be lead-free design which is certified to NSF/ANSI 61 and 372 and meets Federal and State low-lead requirements.

STANDARD FEATURES

- Cup dispenser holds 100 4 oz. cups Access door has cylinder lock and sight opening
- Water dispenser is push back self closing type
- Built-in louver covered drain
- Cup dispenser contains removable receptor for discarded cups behind self closing door and locked access door
- Exclusive FlexiGuard® Safety bubbler
- Flow regulator provides constant stream from 20 to 105 psi water pressure

COOLING SYSTEM

- Compressor: hermetically-sealed, reciprocating type, single phase. Sealed-in lifetime lubrication.
- Condenser: Fan cooled, copper tube with aluminum fins. Fan motor is permanently lubricated.
- Cooling Unit: Combine tube-tank type. Tube portion is continuous coil of copper tubing. Fully insulated with EPS foam that meets UL requirements for self-extinguishing material.
- Refrigerant Control: Refrigerant R134a is controlled by accurately calibrated capillary tube.
- Temperature Control: Easily accessible enclosed adjustable thermostat is factory preset. Requires no adjustment other than for altitude requirements.

Warranty: 5 year limited warranty on the unit's refrigeration system. Electrical components and water system are warranted for 12 months from date of installation or 18 months from factory shipment, whichever date falls first.



CONSTRUCTION

- **Cup Dispenser-Disposer:** #20 gauge, type 304 stainless steel designed to fit against side of fully recessed water cooler. Access doors are flush with front surface of frame which contains recessed area containing self closing push back filler, louvered cover drain and LK144 lock and key.
- **Fountain Top:** #16 gauge, type 304 one piece stainless steel. Anti-splash design has exclusive Cascade basin, tested most splash-resistant. Fountain has 1-3/4" coved corners. Exposed surfaces polished to a uniform Elkay luster finish.
- **Exclusive Flexi-Guard® Safety bubbler** utilizes an infused anti-microbial pliable polyester elastomer to prevent accidental mouth injuries. Flexes on impact.
- **Front Panel Grill:** Made of type 304 stainless steel, polished to a uniform Elkay finish. Removable louvered ventilating grill encloses refrigeration unit and plumbing.
- **Wall Mounting Box:** MB232A mounting box furnished with each unit. Box allows flush mounting to finished wall, plumbing and electrical service holes are pre-punched on both right and left side to facilitate installation.

CAPACITIES CHART							
Model	Voltage /Hertz	Chilling** Capacity	F.L. Amps	Rated Watts	Approx. Ship Wt.	ADA COMPLIANT	NSF/ANSI 61 and 372 Certified
EFRCM82QCDK	240V / 50Hz	6.7 GPH	2	370	146 lbs.	•	•

**Based on 80°F inlet water & 90°F ambient air temp for 50°F chilled drinking water.

This specification describes an Elkay product with design, quality and functional benefits to the user. When making a comparison of other producer's offerings, be certain these features are not overlooked.

**No Lead Wall Mount Fully-Recessed
Water Cooler with Cup Filler,
Dispenser and Waste Receptacle
Model EFRCM82QCDK**

ELKAY®

ROUGH-IN DIMENSIONS

**IMPORTANT!
INSTALLER PLEASE NOTE:**

The grounding of electrical equipment such as telephone, computers, etc., to water lines is a common procedure. This grounding may be in the building or may occur away from the building. This grounding can cause electrical feedback into a water cooler, creating an electrolysis which causes a metallic taste or causes an increase in the metal content of the water. This condition is avoidable by using the proper materials as indicated below.

The drain fittings which are provided by the installer should also be plastic to electrically isolate the cooler from the building plumbing system.

Trap and service stop not included.

WALL OPENING

IMPORTANT: It is necessary to create a wall opening 24 3/4" W x 52 3/4" H and 5 1/4" above the floor line.

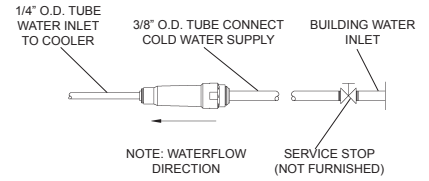
ELECTRICAL DATA

Electrical outlet, three (3) conductor grounded. Locate within safe reach of power cord.

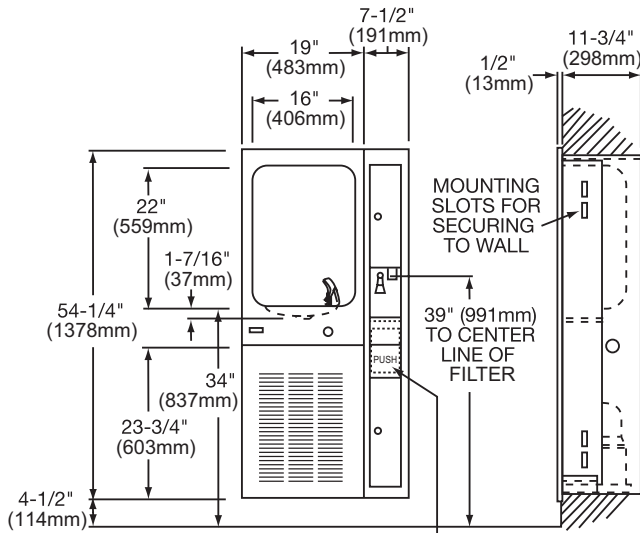
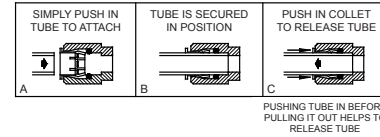
Job Name: _____
 Date: _____ Qty. _____
 Contact Info (Name, Phone, Email): _____

 Approval: _____

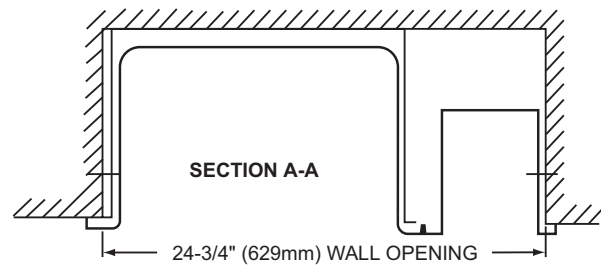
**RATED FOR INDOOR USE ONLY
ONLY AVAILABE FOR QATAR**



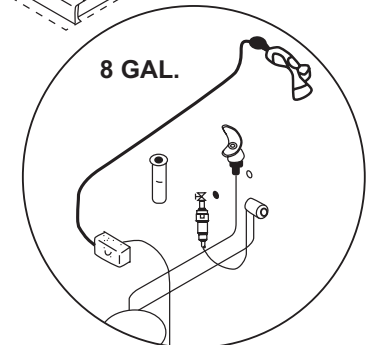
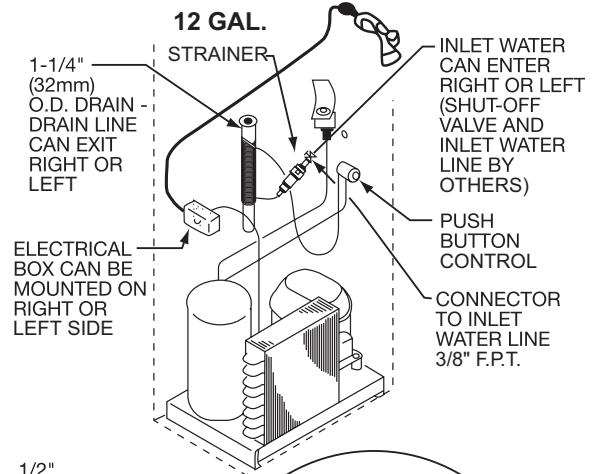
OPERATION OF QUICK CONNECT FITTINGS



REMOVABLE PANEL FOR MAKING PLUMBING CONNECTIONS AT CUP FILLER



DISPENSER & DISPOSAL NOT SHOWN



ALL SUPPLY AND DRAIN CONNECTIONS MUST BE MADE FROM LEFT SIDE

