

# ELKAY®

## SPECIFICATIONS

## Filtered and Vandal-Resistant Wall Mount Water Cooler Model VRCTL8S2QJOC

**RATED FOR INDOOR AND OUTDOOR USE**  
**ONLY AVAILABLE FOR QATAR**

### **PRODUCT SPECIFICATION**

Self-contained wall mount electric two-level refrigerated water cooler. Vandal-resistant unit for use in high demand locations where vandalism may occur. VRCTL8S2QJOC shall deliver 8 GPH of 50°F drinking water at 90°F ambient and 80°F inlet water. Unit shall be stainless steel construction and include vandal-resistant pushbutton activation. Cooler shall include vandal-resistant bubbler. Unit shall meet ADA guidelines. Unit shall be lead-free design which is certified to NSF/ANSI 61 and 372 and meets federal and state low-lead requirements.

### **STANDARD FEATURES**

- Heavy duty vandal-resistant pushbutton activation
- Includes vandal-resistant bubbler
- Flow regulator provides a constant stream from 20 to 105 psi water pressure
- Cooler Panel Finish: Stainless Steel

### **COOLING SYSTEM**

- Compressor: Hermetically sealed, reciprocating type, single phase. Sealed-in lifetime lubrication.
- Condenser: Fan cooled, copper tube with aluminum fins. Fan motor is permanently lubricated.
- Cooling unit: Combination tube-tank type. Self-cleansing. Continuous copper tubing with stainless steel tank. Fully insulated with EPS foam which meets UL requirements for self-extinguishing material.
- Refrigerant Control: Refrigerant R134a is controlled by accurately calibrated capillary tube.
- Temperature Control: Easily accessible enclosed adjustable thermostat is factory preset. Requires no adjustment other than for altitude requirements.



### **CONSTRUCTION**

- Stainless steel basin with integral drain
- Galvanized structural steel cooler chassis provides structural integrity
- Cooler cabinet is stainless steel construction
- Vandal-resistant bubbler is one-piece, heavy-duty construction. Keyed into position to prevent rotation.

### **WARRANTY**

5 Year limited warranty on the unit's refrigeration system. Electrical components and water system are warranted for 12 months from date of installation or 18 months from factory shipment, whichever date falls first.



<b><u>CAPACITIES CHART</u></b>							
Model	Voltage / Hertz	Chilling Capacity**	F.L. Amps	Rated Watts	Approx. Shipping Wt.	ADA Compliant	NSF/ANSI 61 & 372 Certified
VRCTL8S2QJOC	240V / 50Hz	6.7 GPH	2.5	370	84 lbs.	•	•

**\*\*Based on 80°F inlet water and 90°F ambient air temp for 50°F chilled drinking water.**

*This specification describes an Elkay product with design, quality and functional benefits to the user. When making a comparison of other producers' offerings, be certain these features are not overlooked.*

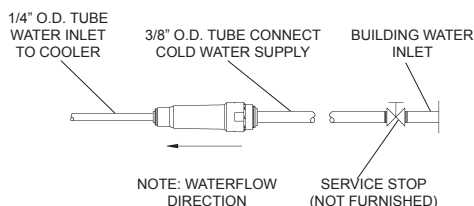
# Filtered and Vandal-Resistant Wall Mount Water Cooler Model VRCTL8S2QJOC

# ELKAY® ROUGH-IN DIMENSIONS

**RATED FOR INDOOR AND OUTDOOR USE**  
**ONLY AVAILABLE FOR QATAR**

## IMPORTANT! INSTALLER PLEASE NOTE:

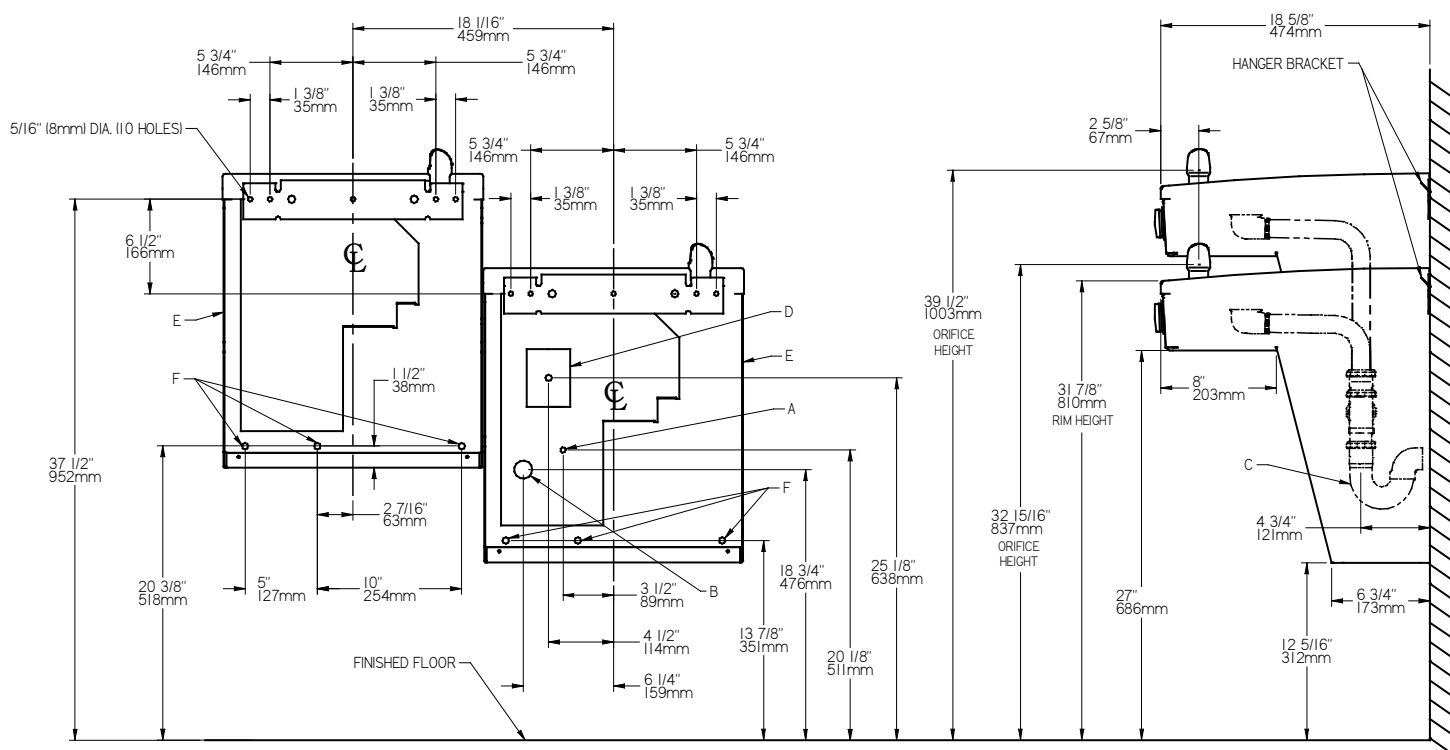
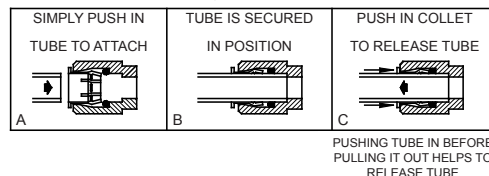
These units are designed and built to provide water to the user which has not been altered by materials in the cooler waterway. The grounding of electrical equipment such as telephone, computers, etc. to water lines is a common procedure. This grounding may be in the building buy may also occur away from the building. This grounding can cause electrical feedback into a water cooler creating an electrolysis which results in a metallic taste or an increase in the metal content of the water. This condition is avoidable by installing the cooler using the proper materials as shown.



## NOTICE:

This water cooler must be connected to the water supply using a dielectric coupling. The cooler is furnished with a non-metallic strainer which meets this requirement. The drain trap which is provided by the installer should also be plastic to completely isolate the cooler from the building plumbing system.

## OPERATION OF QUICK CONNECT FITTINGS



**REDUCE HEIGHT BY 3\"**

## LEGEND:

- A = Recommended Water Supply location. Shut-off Valve (not furnished) to accept 3/8\" O.D. unplated copper tube. Up to 3\" (38mm) maximum out from wall.
- B = Recommended Waste Outlet location. To accommodate 1-1/2\" nominal drain. Drain stub 2\" (51mm) out from wall.
- C = 1-1/2\" Trap (not furnished).
- D = Electrical Supply (3) Wire Recessed Box Duplex Outlet.
- E = Insure proper ventilation by maintaining 6\" (152mm) minimum clearance from cabinet louvers to wall.
- F = 7/16\" (11mm) Bolt Holes for fastening to wall.

NOTE: Installations Must Use Ground Fault Circuit Interrupter. (GFCI)

Job Name:	_____
Model:	_____ Qty. _____
Contact:	_____
Approval Signature:	_____
Notes:	_____