

**PRODUCT SPECIFICATIONS**

Remote type, electric refrigerated water chiller unit. Chilling Capacity of 10.0 GPH (gallons per hour) of 50° F drinking water, based on 80° F inlet water and 90° F ambient, per ASHRAE 18 testing. Installs directly under fountain or other application, or may be located in service area to serve up to 2 remote outlets (within 15 feet recommended). Unit shall be certified to UL 399 and CAN/CSA C22.2 No. 120.

Compact, highly efficient water chiller units are designed for use where large quantities of chilled water are required.

|  |                        |
|--|------------------------|
| <b>Finish:</b>   | Galvanized Steel       |
| <b>Power:</b>  | 115V/60Hz              |
| <b>Chilling Capacity*:</b>   | 10.0 GPH               |
| <b>Rated Watts:</b>  | 490                    |
| <b>Dimensions:</b>   | 19-1/2" x 7-7/8" x 22" |
| <b>Approx. Shipping Weight:</b>  | 74 lbs.                |
| <b>Installation Location:</b>  | Indoor                 |
| <b>No. of Stations Served:</b>   | 2                      |
| *Based on 80° F inlet water & 90° F ambient air temp for 50° F chilled drinking water. |                        |

**CONSTRUCTION**

- Cabinet: Rust-resistant galvanized steel

**COOLING SYSTEM**

- Compressor: Hermetically-sealed, reciprocating type, single phase. Sealed-in lifetime lubrication.
- Condenser: Fan cooled, copper tube with aluminum fins. Fan motor is permanently lubricated.
- Cooling Unit: Combination tube-tank type. Continuous copper tubing is fully insulated with foam that meets UL requirements for self-extinguishing material.
- Refrigerant Control: Refrigerant R-134a is controlled by accurately calibrated capillary tube.
- Temperature Control: Easily accessible enclosed adjustable thermostat is factory preset. Requires no adjustment other than for altitude requirements.



A Century of Tradition and Quality.

For more than 100 years, Elkay has been making innovative products and providing exceptional customer care. We take pride in offering plumbing products that make life easier, inspire change and leave the world a better place.



**Included with Product:** Water Chiller

**PRODUCT COMPLIANCE**

Buy American Act

CAN/CSA C22.2 No. 120

NSF/ANSI 61 (Q≤1) & 372 (lead free)

UL 399



[Installation Instructions \(PDF\) - 2000000531](#)

[Warranty \(PDF\)](#)

PART: \_\_\_\_\_ QTY: \_\_\_\_\_

PROJECT: \_\_\_\_\_



CONTACT: \_\_\_\_\_

DATE: \_\_\_\_\_

NOTES: \_\_\_\_\_

APPROVAL: \_\_\_\_\_

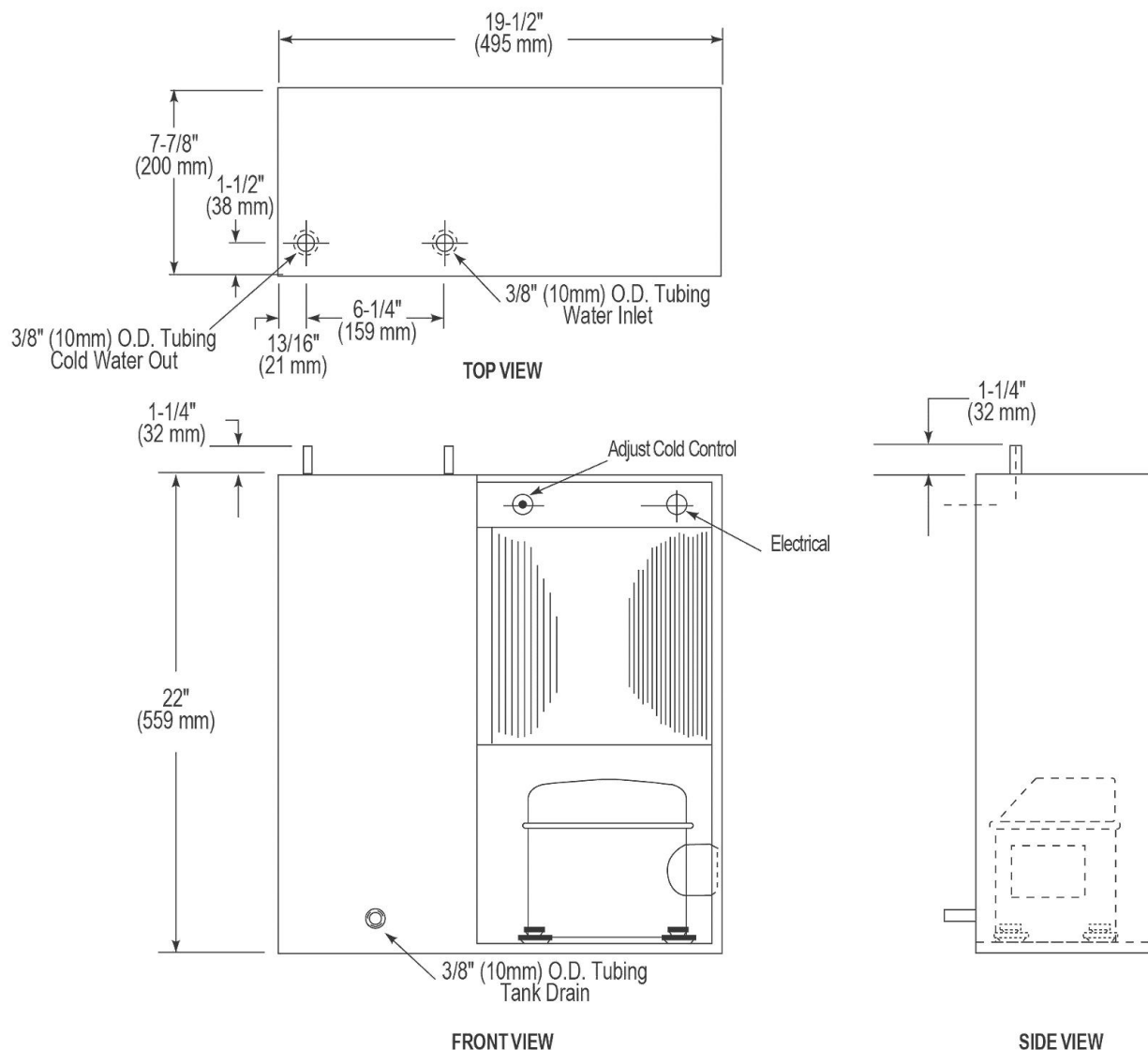
*In keeping with our policy of continuing product improvement, reserves the right to change product specifications without notice. Please visit [www.elkay.com](#) for the most current version of product specification sheets. This specification describes product with design, quality, and functional benefits to the user. When making a comparison of other producers' offerings, be certain these features are not overlooked.*

| Optional Accessories   |  |   |
|------------------------|--|---|
| <a href="#">PM3</a>    | On-wall Chiller Shelf for Use With 1 or 5 or 10 GPH Chillers<br><a href="#">Spec Sheet (PDF)</a> |  |
| <a href="#">26784C</a> | Halsey Taylor Chiller Wall Grill Cover<br><a href="#">Spec Sheet (PDF)</a>                       |  |

In keeping with our policy of continuing product improvement, reserves the right to change product specifications without notice. Please visit [here](#) for the most current version of product specification sheets. This specification describes product with design, quality, and functional benefits to the user. When making a comparison of other producers' offerings, be certain these features are not overlooked.

### Operating Pressures:

Supply water - recommended water pressure range is 40-105 psi



NOTE: It is important to insure proper ventilation. Allow a minimum clearance of 6" (152 mm) in front and 3"(76 mm) in the rear of the unit. If unit is to be installed in an enclosure, allow the following clearances around unit: 1"(25 mm) each side, 3"(76 mm) in the rear, 3"(76 mm) above.

In keeping with our policy of continuing product improvement, reserves the right to change product specifications without notice. Please visit [for the most current version of product specification sheets](#). This specification describes product with design, quality, and functional benefits to the user. When making a comparison of other producers' offerings, be certain these features are not overlooked.