

**PRODUCT SPECIFICATIONS**

Elkay<sup>®</sup> Mounting Frame for Recessed EHFRA Refrigerated Coolers. Overall dimensions are 18-1/2" x 11-3/4" x 51-1/2". Made of Galvanized Steel.

<b>Mounting Type:</b>	Recessed Mount
<b>Material:</b>	Galvanized Steel
<b>Finish:</b>	Galvanized Steel
<b>Dimensions:</b>	18-1/2" x 11-3/4" x 51-1/2"
<b>Shipping Weight:</b>	35 lbs.

**Special Note:** Mounting frame included with Elkay EHFRAM7K refrigerated models.

- Single-station mounting frame enables installation of recessed drinking water models.
- Compatible with specific Elkay<sup>®</sup> refrigerated models; see specifications tab for details
- Mounting frame included with specific recessed models.
- Secures directly to a variety of load-bearing surfaces.
- Refer to end product for ADA compliance information.
- Built in the USA.

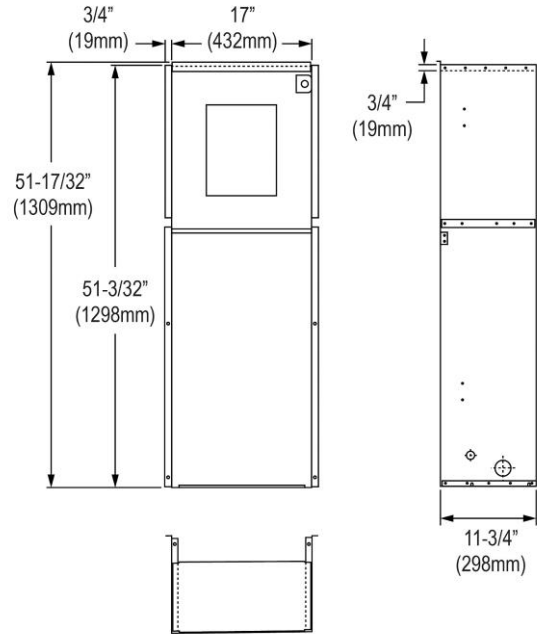


**Included with Product: Mounting Frame Assembly**

A Century of Tradition and Quality. For more than 100 years, Elkay has been making innovative products and providing exceptional customer care. We take pride in offering plumbing products that make life easier, inspire change and leave the world a better place.



[Installation Instructions \(PDF\) - 92855C](#)



PART: \_\_\_\_\_ QTY: \_\_\_\_\_

PROJECT: \_\_\_\_\_

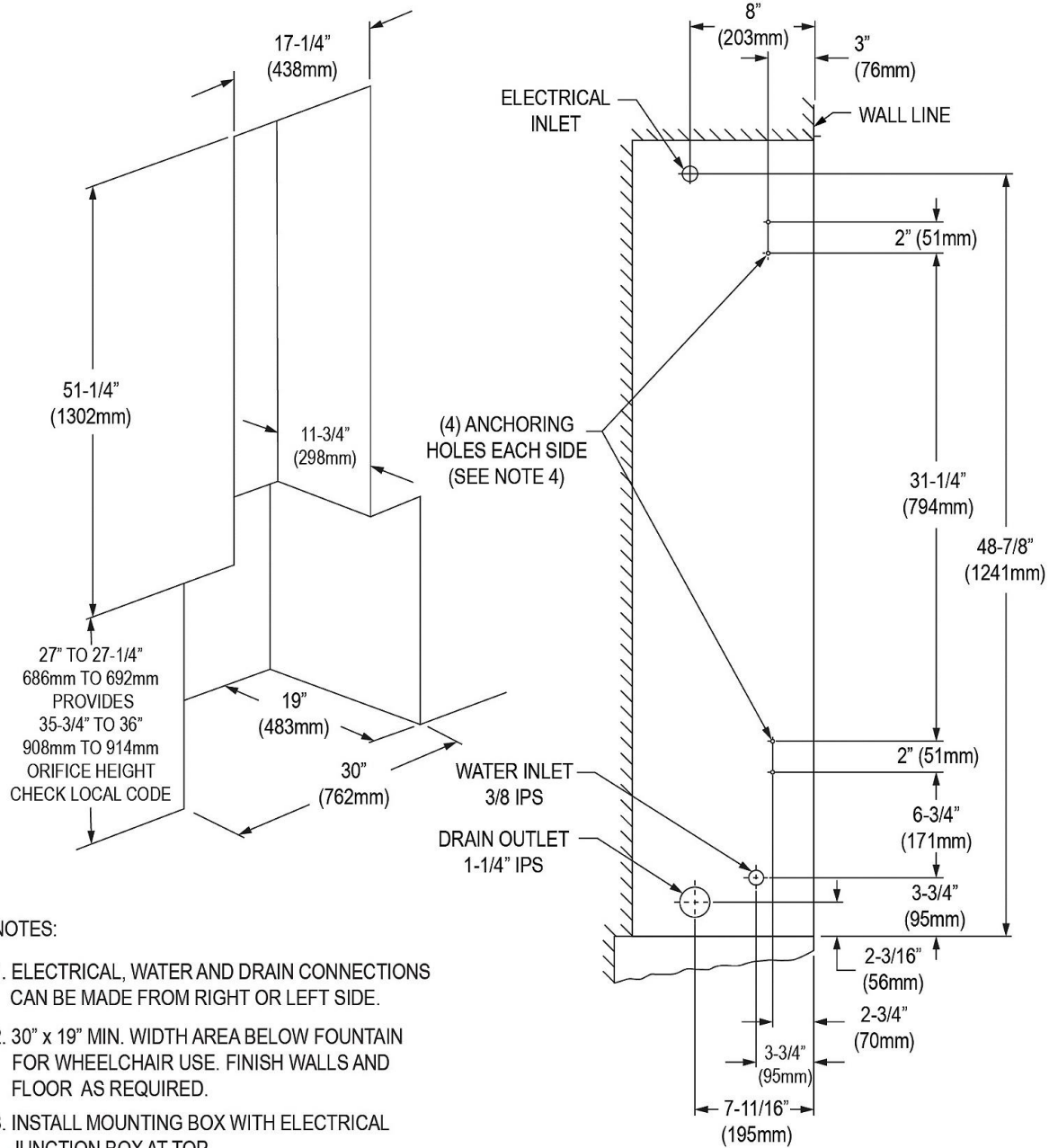
CONTACT: \_\_\_\_\_

DATE: \_\_\_\_\_

NOTES: \_\_\_\_\_

APPROVAL: \_\_\_\_\_

*In keeping with our policy of continuing product improvement, Elkay reserves the right to change product specifications without notice. Please visit [elkay.com](http://elkay.com) for the most current version of Elkay product specification sheets. This specification describes an Elkay product with design, quality, and functional benefits to the user. When making a comparison of other producers' offerings, be certain these features are not overlooked.*



**NOTES:**

1. ELECTRICAL, WATER AND DRAIN CONNECTIONS CAN BE MADE FROM RIGHT OR LEFT SIDE.
2. 30" x 19" MIN. WIDTH AREA BELOW FOUNTAIN FOR WHEELCHAIR USE. FINISH WALLS AND FLOOR AS REQUIRED.
3. INSTALL MOUNTING BOX WITH ELECTRICAL JUNCTION BOX AT TOP.
4. FOR WALL BOX INSTALLATION USE SCREWS OR BOLTS (MIN. OF 8) THRU HOLES OR KNOCK-OUTS PROVIDED ON EACH SIDE. (SCREWS OR BOLTS TO BE FURNISHED BY INSTALLER).

*In keeping with our policy of continuing product improvement, Elkay reserves the right to change product specifications without notice. Please visit [elkay.com](http://elkay.com) for the most current version of Elkay product specification sheets. This specification describes an Elkay product with design, quality, and functional benefits to the user. When making a comparison of other producers' offerings, be certain these features are not overlooked.*