



# Model LZS8WSBPRO

Elkay Pro Filtration™ Bottle Filling Station & Single ADA Cooler  
Refrig Ultra-Capacity Lead Reduction BK

TAG

## PRODUCT SPECIFICATIONS

Elkay Pro Filtration™ Bottle Filling Station & Single ADA Cooler Refrig Ultra-Capacity Lead Reduction BK. Chilling Capacity of 8.0 GPH (gallons per hour) of 50° F drinking water, based on 80° F inlet water and 90° F ambient, per ASHRAE 18 testing. Features shall include Antimicrobial\*, Automatic Filter Status Reset, Energy Savings, Filtered, Green Ticker™, Hands Free, Laminar Flow, Real Drain, Visual Filter Monitor, Alcove Light, Automatic Filter Flush, Stainless Steel Alcove, Pro Filtration System, Top Mount Quick Filter Change. Furnished with Flexi-Guard® Safety Bubbler. Electronic Bottle Filler Sensor with Electronic Front and Side Bubbler Pushbar activation. Product shall be Wall Mount (On Wall), for Indoor applications, serving 1 station(s). Unit shall be certified to UL 399 and CAN/CSA C22.2 No. 120.



<b>Special Features:</b>	Antimicrobial, Automatic Filter Status Reset, Energy Savings, Filtered, Green Ticker™, Hands Free, Laminar Flow, Real Drain, Visual Filter Monitor, Alcove Light, Automatic Filter Flush, Stainless Steel Alcove, Pro Filtration System, Top Mount Quick Filter Change
<b>Finish:</b>	Black Stainless (BK)
<b>Power:</b>	115V/60Hz
<b>Bubbler Style:</b>	Flexi-Guard® Safety Bubbler
<b>Activation by:</b>	Electronic Bottle Filler Sensor with Electronic Front and Side Bubbler Pushbar
<b>Mounting Type:</b>	Wall Mount (On Wall)
<b>Chilling Capacity*:</b>	8.0 GPH
<b>Full Load Amps</b>	5
<b>Dimensions (L x W x H):</b>	18-3/8" x 19" x 46-7/8"
<b>Approx. Shipping Weight:</b>	79 lbs.
<b>Installation Location:</b>	Indoor
<b>No. of Stations Served:</b>	1
*Based on 80° F inlet water & 90° F ambient air temp for 50° F chilled drinking water.	

Included with Product:

**Bottle Filler,  
Water Cooler,  
Ultra Capacity Filter**

### Ships in one box.

A Century of Tradition and Quality. For more than 100 years, Elkay has been making innovative products and providing exceptional customer care. We take pride in offering plumbing products that make life easier, inspire change and leave the world a better place.



### PRODUCT COMPLIANCE

ADA & ICC A117.1  
ASME A112.19.3/CSA B45.4  
CAN/CSA C22.2 No. 120  
FCC & ISED  
NSF/ANSI 42, 53, 61 (Q≤1), 372 (lead free), & 401  
UL 399



This Zurn Elkay product has a certified Environmental Product Declaration (EPD) that complies with an independently verified life cycle assessment (LCA). Visit [Product Declarations and Certifications](#) for more information.



Complies with ADA & ICC A117.1 accessibility requirements when installed according to the requirements outlined in these standards. Installation may require additional components and/or construction features to be fully compliant. Consult the local Authority Having Jurisdiction if necessary.

[Installation Instructions \(PDF\) - 2000002266](#)

**5 Year Limited Warranty** on the refrigeration system of the unit. Electrical components and water system are warranted for 12 months from date of installation. **Warranty pertains to drinking water applications only. Non-drinking water applications are not covered under warranty.**

[Warranty \(PDF\)](#)

PART: \_\_\_\_\_ QTY: \_\_\_\_\_

PROJECT: \_\_\_\_\_

CONTACT: \_\_\_\_\_

DATE: \_\_\_\_\_

NOTES: \_\_\_\_\_ APP

ROVAL: \_\_\_\_\_

*In keeping with our policy of continuing product improvement, Elkay reserves the right to change product specifications without notice. Please visit [elkay.com](#) for the most current version of Elkay product specification sheets. This specification describes an Elkay product with design, quality, and functional benefits to the user. When making a comparison of other producers' offerings, be certain these features are not overlooked.*



# Model LZS8WSBPRO

Elkay Pro Filtration™ Bottle Filling Station & Single ADA Cooler  
Refrig Ultra-Capacity Lead Reduction BK

TAG

Features	
<ul style="list-style-type: none"> <li>High-Performance System: Pairs exclusively with Elkay Pro Filtration filters to deliver safer drinking water</li> </ul>	<ul style="list-style-type: none"> <li>Faster Filter Changes: Replace filters easily and more efficiently at the top of the unit</li> </ul>
<ul style="list-style-type: none"> <li>Save Time and Resources: Top of unit houses both a stage 1 sediment prefilter and long-lasting contaminant filter for simplified maintenance</li> </ul>	<ul style="list-style-type: none"> <li>Ultra-Capacity Filter Included: Elkay Pro Filtration 10,000-gallon filter is tested and certified to NSF/ANSI 42, 53 and 401 to reduce lead, microplastics and more; ideal for high-traffic areas</li> </ul>
<ul style="list-style-type: none"> <li>Automatic Filter Recognition: Elkay Pro Filtration system recognizes new filter and automatically resets filter status lights, shortening installation time</li> </ul>	<ul style="list-style-type: none"> <li>Automatic Filter Flushing: System detects newly installed filters and automatically flushes the system to shorten installation time and clean debris and air from the waterway</li> </ul>
<ul style="list-style-type: none"> <li>Never Miss a Filter Change: The intuitive blue LCD filter life gauge instills confidence in users who can easily see remaining filter capacity.</li> </ul>	<ul style="list-style-type: none"> <li>Elevated Design: Sleek, architectural design takes up little space and features innovative functionality for a minimalist, modern aesthetic</li> </ul>
<ul style="list-style-type: none"> <li>Smart Connected Units: Save time and resources when you track filter status, monitor performance, anticipate maintenance and flush the unit from anywhere.</li> </ul>	<ul style="list-style-type: none"> <li>Sustainable Choice: Drink water sustainably; view number of 20-ounce plastic water bottles saved from waste and ounces dispensed on the unit's display</li> </ul>
<ul style="list-style-type: none"> <li>Energy and Cost Efficient: Hermetically sealed refrigeration system conserving energy and lowering operating costs</li> </ul>	<ul style="list-style-type: none"> <li>Cleaner Basin: Real drain system eliminates standing water</li> </ul>
<ul style="list-style-type: none"> <li>Touchless Bottle Filling: Sensor-activated bottle filler delivers 20 ounces of water for an effortless, more hygienic experience</li> </ul>	<ul style="list-style-type: none"> <li>Quick Fill: Bottle fill rate and filter flow rate match at 1.0 GPM for a quick fill, and laminar flow feature minimizes splash, while providing a clear stream of water</li> </ul>
<ul style="list-style-type: none"> <li>Tempered Glass Display: Designed for high-traffic environments to withstand impact and protect long-term performance.</li> </ul>	<p>*Antimicrobial claims are in reference to components manufactured antimicrobial agents, helping to provide clean, stain- and odor-free surfaces.</p>

Filtration Options	Suffix	Description	Filters Included
Ultra-Capacity Filter	-	Elkay Pro Filtration 10,000-gallon filter is tested and certified to NSF/ANSI 42, 53 and 401 to reduce lead, microplastics and more; ideal for high-traffic areas	FL10
2 Ultra-Capacity Filter	-2FL10	Elkay Pro Filtration 10,000-gallon filters are tested and certified to NSF/ANSI 42, 53 and 401 to reduce lead, microplastics and more; ideal for high-traffic areas	(2) FL10
Total PFAS* Filter	-FLP4	Elkay Pro Filtration 4,000-gallon filter is tested and certified to NSF/ANSI 42, 53 and 401 to reduce Total PFAS, lead, microplastics and more (*Total PFAS as defined by NSF/ANSI 53)	FLP4
2 Total PFAS* Filter	-2FLP4	Elkay Pro Filtration 4,000-gallon filters are tested and certified to NSF/ANSI 42, 53 and 401 to reduce Total PFAS, lead, microplastics and more (*Total PFAS as defined by NSF/ANSI 53)	(2) FLP4
Sediment Prefilter	-FSR5	Elkay Pro Filtration Sediment Prefilter is certified by IAPMO R&T to NSF/ANSI 42 for material safety and structural integrity only, and to NSF/ANSI/CAN 372 for lead free compliance	FL10 + FSR5
UV	-UV	Elkay Pro Filtration 10,000-gallon filter is tested and certified to NSF/ANSI 42, 53 and 401 to reduce lead, microplastics and more; ideal for high-traffic areas. Units are equipped with a built-in UVC-LED at the dispense point	FL10

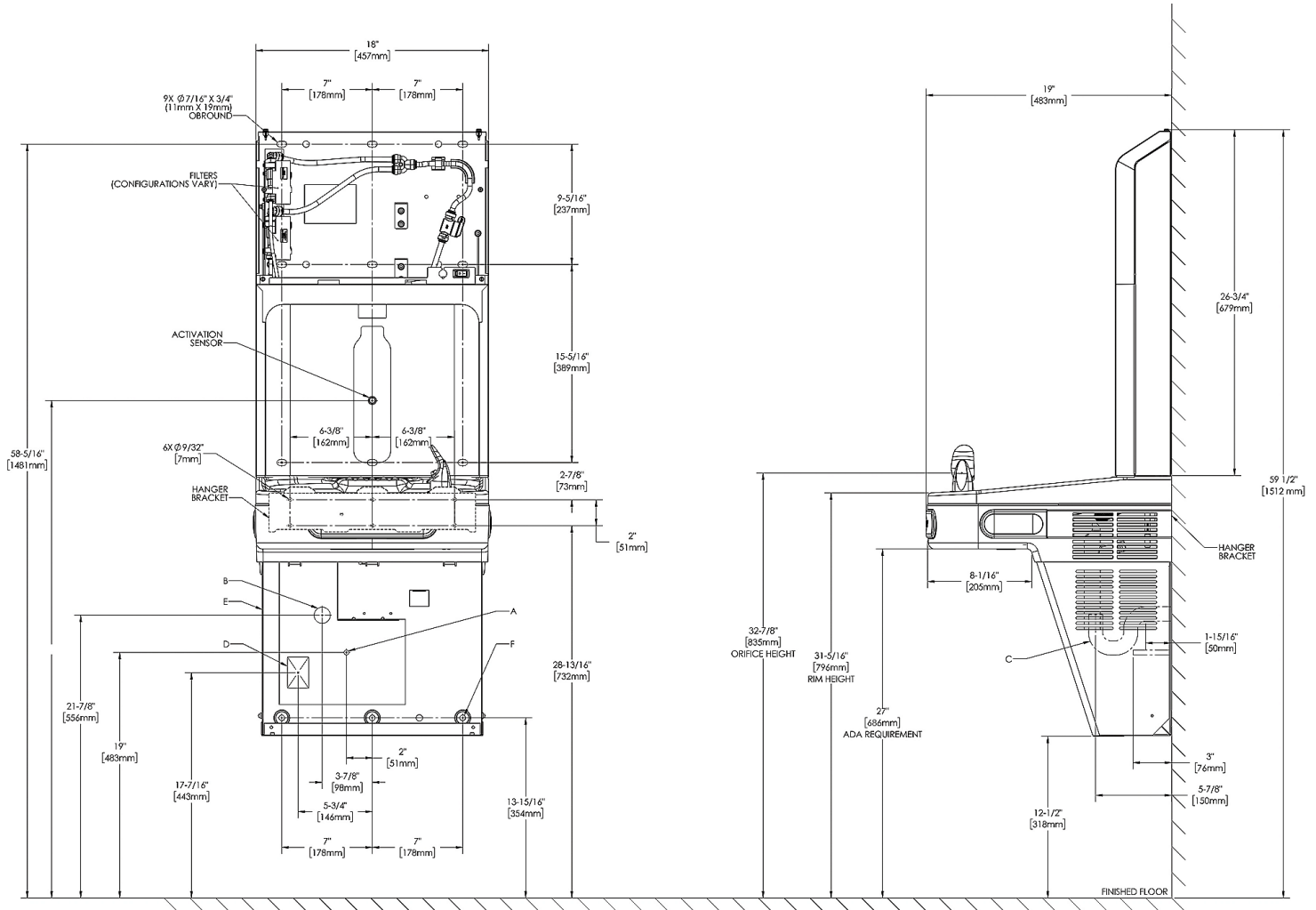
Optional Accessories		
<a href="#">FL6</a>	Elkay Pro Filtration High-Capacity Lead + Microplastics 6000 gal. Filter	<a href="#">Spec Sheet (PDF)</a>
<a href="#">FLP4</a>	Elkay Pro Filtration Total PFAS* + Lead + Microplastics 4000 gal. Filter	<a href="#">Spec Sheet (PDF)</a>
<a href="#">FL10</a>	Elkay Pro Filtration Ultra-Capacity Lead + Microplastics 10000 gal. Filter	<a href="#">Spec Sheet (PDF)</a>
<a href="#">FSR5</a>	Elkay Pro Filtration Stage 1 Sediment Prefilter	<a href="#">Spec Sheet (PDF)</a>
<a href="#">ZGW-LORA-W1-LTE</a>	Zurn Gateway for Connected Enabled Products	<a href="#">Spec Sheet (PDF)</a>
<a href="#">SSBFUP-PRO</a>	Back Panel Assembly Kit for Single Coolers with Elkay Pro Filtration Bottle Filler	<a href="#">Spec Sheet (PDF)</a>

In keeping with our policy of continuing product improvement, Elkay reserves the right to change product specifications without notice. Please visit [elkay.com](http://elkay.com) for the most current version of Elkay product specification sheets. This specification describes an Elkay product with design, quality, and functional benefits to the user. When making a comparison of other producers' offerings, be certain these features are not overlooked.

MLP100

In-wall Carrier for Single-station On-wall Bottle Fillers Coolers & Fountains

[Spec Sheet \(PDF\)](#)



In keeping with our policy of continuing product improvement, Elkay reserves the right to change product specifications without notice. Please visit [elkay.com](http://elkay.com) for the most current version of Elkay product specification sheets. This specification describes an Elkay product with design, quality, and functional benefits to the user. When making a comparison of other producers' offerings, be certain these features are not overlooked.