



PRODUCT SPECIFICATIONS

Elkay Pro Filtration® Connected Bottle Filling Station & Single ADA Cooler Refrig Dbl Ultra-Capacity Lead Reduction BK. Chilling Capacity of 8.0 GPH (gallons per hour) of 50° F drinking water, based on 80° F inlet water and 90° F ambient, per ASHRAE 18 testing. Features shall include Alcove Light, Antimicrobial*, Automatic Filter Flush, Automatic Filter Status Reset, Energy Savings, Filtered, Green Ticker™, Hands Free, Laminar Flow, Pro Filtration System, Real Drain, Stainless Steel Alcove, Top Mount Quick Filter Change, Visual Filter Monitor, Cloud Connected Device, Dual Filter, Tempered Glass Display Cover. Furnished with Flexi-Guard® Safety Bubbler. Electronic Bottle Filler Sensor with Electronic Front and Side Bubbler Pushbar activation. Product shall be Wall Mount (On Wall), for Indoor applications, serving 1 station(s).

Special Features:	Alcove Light, Antimicrobial, Automatic Filter Flush, Automatic Filter Status Reset, Energy Savings, Filtered, Green Ticker™, Hands Free, Laminar Flow, Pro Filtration System, Real Drain, Stainless Steel Alcove, Top Mount Quick Filter Change, Visual Filter Monitor, Cloud Connected Device, Dual Filter, Tempered Glass Display Cover
Finish:	Black Stainless (BK)
Power:	115V/60Hz
Bubbler Style:	Flexi-Guard® Safety Bubbler
Activation by:	Electronic Bottle Filler Sensor with Electronic Front and Side Bubbler Pushbar
Mounting Type:	Wall Mount (On Wall)
Chilling Capacity*:	8.0 GPH
Full Load Amps	5
Dimensions (L x W x H):	18-3/8" x 19" x 46-7/8"
Approx. Shipping Weight:	81 lbs.
Installation Location:	Indoor
No. of Stations Served:	1
*Based on 80° F inlet water & 90° F ambient air temp for 50° F chilled drinking water.	

Special Note: plumbSMART Gateway and Account required for cloud connection.

COOLING SYSTEM

- Compressor: Hermetically-sealed, reciprocating type, single phase. Sealed-in lifetime lubrication.
- Condenser: Fan cooled, copper tube with aluminum fins. Fan motor is permanently lubricated.
- Cooling Unit: Combination tube-tank type. Continuous copper tubing with is fully insulated with EPS foam that meets UL requirements for self-extinguishing material.
- Refrigerant Control: Refrigerant R-134a is controlled by accurately calibrated capillary tube.
- Temperature Control: Easily accessible enclosed adjustable thermostat is factory preset. Requires no adjustment other than for altitude requirements.



Included with Product:

**Bottle Filler,
Water Cooler,
(2) Ultra Capacity Filters**

Ships in one box.

A Century of Tradition and Quality. For more than 100 years, Elkay has been making innovative products and providing exceptional customer care. We take pride in offering plumbing products that make life easier, inspire change and leave the world a better place.

PRODUCT COMPLIANCE

ADA & ICC A117.1

ASME A112.19.3/CSA B45.4

CAN/CSA C22.2 No. 120

FCC & ISED

NSF/ANSI 42, 53, 61 (Q≤1), 372 (lead free), & 401

UL 399



Complies with ADA & ICC A117.1 accessibility requirements when installed according to the requirements outlined in these standards. Installation may require additional components and/or construction features to be fully compliant. Consult the local Authority Having Jurisdiction if necessary.

[Installation Instructions \(PDF\) - 2000002266](#)

5 Year Limited Warranty on the refrigeration system of the unit. Electrical components and water system are warranted for 12 months from date of installation. **Warranty pertains to drinking water applications only. Non-drinking water applications are not covered under warranty.**

[Warranty \(PDF\)](#)

PART: _____ QTY: _____

PROJECT: _____

CONTACT: _____

DATE: _____

NOTES: _____ APP

ROVAL: _____

In keeping with our policy of continuing product improvement, reserves the right to change product specifications without notice. Please visit for the most current version of product specification sheets. This specification describes product with design, quality, and functional benefits to the user. When making a comparison of other producers' offerings, be certain these features are not overlooked.

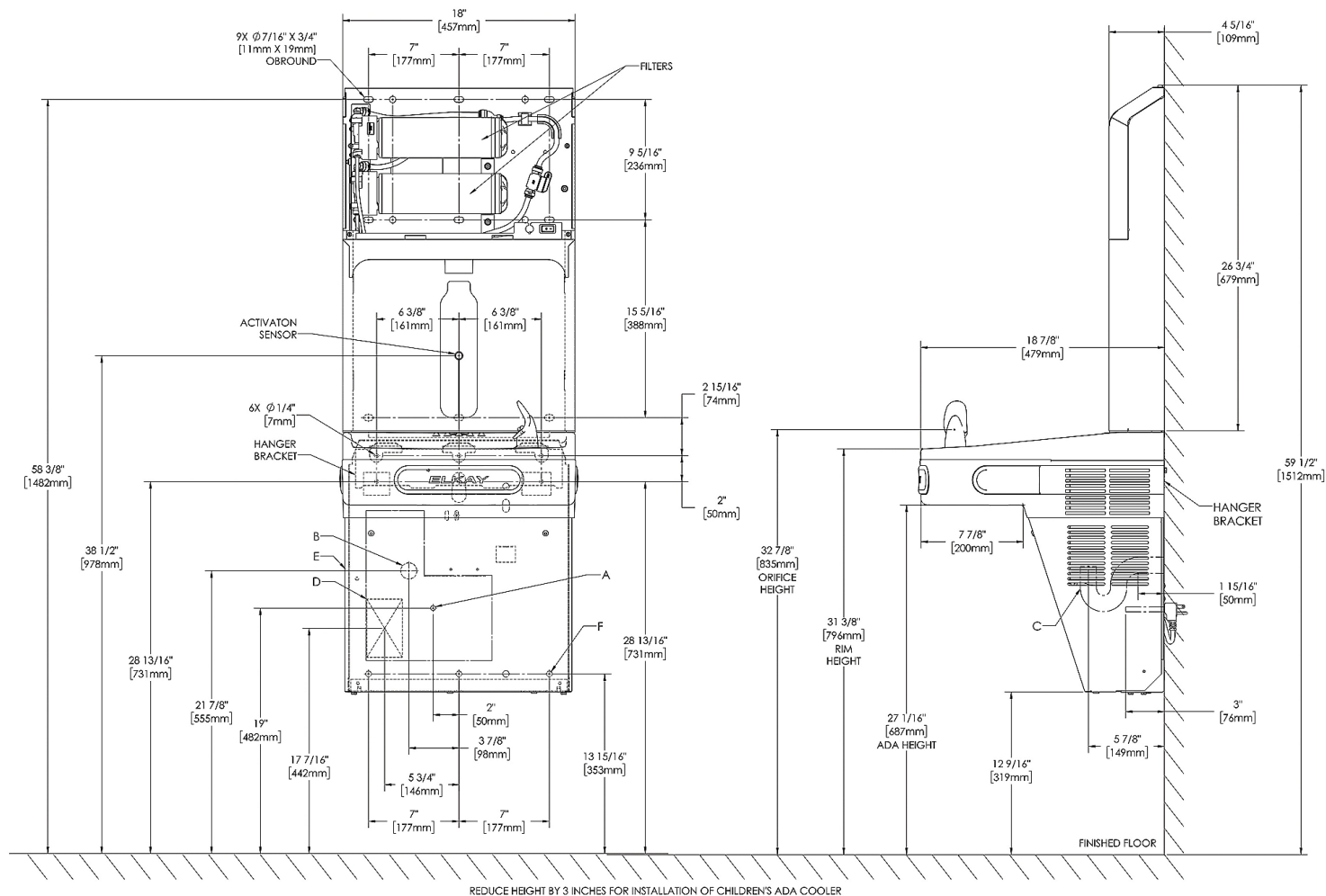
Features

<ul style="list-style-type: none"> High-Performance System: Pairs exclusively with Elkay Pro Filtration filters to deliver safer drinking water Save Time and Resources: Access the ultra-capacity filters from the top, reducing service time and simplifying maintenance. Automatic Filter Recognition: Elkay Pro Filtration system recognizes new filter and automatically resets filter status lights, shortening installation time Never Miss a Filter Change: The intuitive blue LCD filter life gauge instills confidence in users who can easily see remaining filter capacity. Smart Connected Units: Save time and resources when you track filter status, monitor performance, anticipate maintenance and flush the unit from anywhere. Energy and Cost Efficient: Hermetically sealed refrigeration system conserving energy and lowering operating costs Touchless Bottle Filling: Sensor-activated bottle filler delivers 20 ounces of water for an effortless, more hygienic experience Double Capacity Filtration: Supports up to 20,000 gallons of cleaner, filtered water for longer service life. 	<ul style="list-style-type: none"> Faster Filter Changes: Replace filters easily and more efficiently at the top of the unit 2 Ultra-Capacity Filters Included: Elkay Pro Filtration 10,000-gallon filters is tested and certified to NSF/ANSI 42, 53 and 401 to reduce lead, microplastics and more; ideal for high-traffic areas Automatic Filter Flushing: System detects newly installed filters and automatically flushes the system to shorten installation time and clean debris and air from the waterway Elevated Design: Sleek, architectural design takes up little space and features innovative functionality for a minimalist, modern aesthetic Sustainable Choice: Track your impact in real time with a display that shows ounces dispensed and the number of 20-ounce plastic bottles kept out of landfills. Cleaner Basin: Real drain system eliminates standing water Quick Fill: Bottle fill rate and filter flow rate match at 1.1 GPM for a quick fill, and laminar flow feature minimizes splash, while providing a clear stream of water *Antimicrobial claims are in reference to components manufactured antimicrobial agents, helping to provide clean, stain- and odor-free surfaces.
----------------------------------------------------------------------------------------------------------------------------------------------------------------------------------------------------------------------------------------------------------------------------------------------------------------------------------------------------------------------------------------------------------------------------------------------------------------------------------------------------------------------------------------------------------------------------------------------------------------------------------------------------------------------------------------------------------------------------------------------------------------------------------------------------------------------------------------------------------------------------------------------------------------------------------------------------------------------------------------------------------------------------------------------------------------------------------------------------------------------------------------------------------------------------------------------------	-------------------------------------------------------------------------------------------------------------------------------------------------------------------------------------------------------------------------------------------------------------------------------------------------------------------------------------------------------------------------------------------------------------------------------------------------------------------------------------------------------------------------------------------------------------------------------------------------------------------------------------------------------------------------------------------------------------------------------------------------------------------------------------------------------------------------------------------------------------------------------------------------------------------------------------------------------------------------------------------------------------------------------------------------------------------------------------------------------------------------------------------------------------------------------------------------------------------------------------------------------------------------------------------------

Optional Accessories

FL6	Elkay Pro Filtration® High-Capacity Lead + Microplastics 6000 gal. Filter	Spec Sheet (PDF)
FLP4	Elkay Pro Filtration® Total PFAS* + Lead + Microplastics 4000 gal. Filter	Spec Sheet (PDF)
FL10	Elkay Pro Filtration® Ultra-Capacity Lead + Microplastics 10000 gal. Filter	Spec Sheet (PDF)
FSR5	Elkay Pro Filtration® Stage 1 Sediment Prefilter	Spec Sheet (PDF)
ZGW-LORA-W1-LTE	Zurn Gateway for Connected Enabled Products	Spec Sheet (PDF)
SSBFUP-PRO	Back Panel Assembly Kit for Single Coolers with Elkay Pro Filtration Bottle Filler	Spec Sheet (PDF)
MLP100	In-wall Carrier for Single-station On-wall Bottle Fillers Coolers & Fountains	Spec Sheet (PDF)

In keeping with our policy of continuing product improvement, reserves the right to change product specifications without notice. Please visit [elkay.com](#) for the most current version of product specification sheets. This specification describes product with design, quality, and functional benefits to the user. When making a comparison of other producers' offerings, be certain these features are not overlooked.



LEGEND:

A = Recommended Water Supply location. Shut-off Valve (not furnished) to accept 3/8" O.D. unplated copper tube. Up to 3" (76mm) maximum out from wall.
B = Recommended Waste Outlet location. To accommodate 1-1/4" nominal drain. Drain stub 2" (51mm) out from wall.
C = 1-1/4" Trap (not furnished).
D = Electrical Supply (3) Wire Recessed Duplex Outlet.
E = Insure proper ventilation by maintaining 6" (152mm) minimum clearance from cabinet louvers to wall.
F = 7/16" (11mm) Bolt Holes for fastening to wall.
Note: New Installations Must Use Ground Fault Circuit Interrupter (GFCI).

In keeping with our policy of continuing product improvement, reserves the right to change product specifications without notice. Please visit www.elkay.com for the most current version of product specification sheets. This specification describes product with design, quality, and functional benefits to the user. When making a comparison of other producers' offerings, be certain these features are not overlooked.