



Model LZS8WS_K FAMILY

ezH2O® Bottle Filling Station & Single ADA Cooler Refrigerated
Stainless Lead Reduction Quick Filter Change

TAG

PRODUCT SPECIFICATIONS

ezH2O® Bottle Filling Station & Single ADA Cooler Refrigerated Stainless Lead Reduction Quick Filter Change. Chilling Capacity of 8.0 GPH (gallons per hour) of 50° F drinking water, based on 80° F inlet water and 90° F ambient, per ASHRAE 18 testing. Features shall include Antimicrobial*, Filtered, Green Ticker™, Hands Free, Laminar Flow, Real Drain, Visual Filter Monitor, Quick Filter Change, Automatic Filter Status Reset, Alcove Light. Furnished with Flexi-Guard® Safety Bubbler. Electronic Bottle Filler Sensor with Electronic Front and Side Bubbler Pushbar activation. Product shall be Wall Mount (On Wall), for Indoor applications, serving 1 station(s). Unit shall be certified to UL 399 and CAN/CSA C22.2 No. 120.

Special Features:	Antimicrobial, Filtered, Green Ticker™, Hands Free, Laminar Flow, Real Drain, Visual Filter Monitor, Quick Filter Change, Automatic Filter Status Reset, Alcove Light
Power:	115V/60Hz
Bubbler Style:	Flexi-Guard® Safety Bubbler
Activation by:	Electronic Bottle Filler Sensor with Electronic Front and Side Bubbler Pushbar
Mounting Type:	Wall Mount (On Wall)
Chilling Capacity*:	8.0 GPH
Full Load Amps	5
Rated Watts:	370
Dimensions (L x W x H):	18-3/8" x 19" x 39-7/16"
Approx. Shipping Weight:	85 lbs.
Installation Location:	Indoor
No. of Stations Served:	1
*Based on 80° F inlet water & 90° F ambient air temp for 50° F chilled drinking water.	



Included with Product: Bottle Filler, Water Cooler, Filter

Ships in one box.

A Century of Tradition and Quality. For more than 100 years, Elkay has been making innovative products and providing exceptional customer care. We take pride in offering plumbing products that make life easier, inspire change and leave the world a better place.



PRODUCT COMPLIANCE

- ADA & ICC A117.1
- ASME A112.19.3/CSA B45.4
- CAN/CSA C22.2 No. 120
- FCC & ISED
- NSF/ANSI 42, 53, 61 (Q≤1), 372 (lead free), & 401
- UL 399



Complies with ADA & ICC A117.1 accessibility requirements when installed according to the requirements outlined in these standards. Installation may require additional components and/or construction features to be fully compliant. Consult the local Authority Having Jurisdiction if necessary.

[Installation Instructions \(PDF\) - 2000001776](#)

5 Year Limited Warranty on the refrigeration system of the unit. Electrical components and water system are warranted for 12 months from date of installation. **Warranty pertains to drinking water applications only. Non-drinking water applications are not covered under warranty.**

[Warranty \(PDF\)](#)

Special Note: Retrofit accessory, plumbSMART Gateway, and Account required for cloud connection.

COOLING SYSTEM

- Compressor: Hermetically-sealed, reciprocating type, single phase. Sealed-in lifetime lubrication.
- Condenser: Fan cooled, copper tube with aluminum fins. Fan motor is permanently lubricated.
- Cooling Unit: Combination tube-tank type. Continuous copper tubing with is fully insulated with EPS foam that meets UL requirements for self-extinguishing material.
- Refrigerant Control: Refrigerant R-134a is controlled by accurately calibrated capillary tube.
- Temperature Control: Easily accessible enclosed adjustable thermostat is factory preset. Requires no adjustment other than for altitude requirements.

PART: _____ QTY: _____

PROJECT: _____

CONTACT: _____

DATE: _____






NOTES: _____ APP

ROVAL: _____

In keeping with our policy of continuing product improvement, Elkay reserves the right to change product specifications without notice. Please visit elkay.com for the most current version of Elkay product specification sheets. This specification describes an Elkay product with design, quality, and functional benefits to the user. When making a comparison of other producers' offerings, be certain these features are not overlooked.

Features	
<ul style="list-style-type: none"> • Touchless, sensor activation (bottle filler) designed for easy use; easy-to-operate push-bar activation (bubbler) 	<ul style="list-style-type: none"> • Hermetically sealed refrigeration system provides chilled water to satisfy thirst
<ul style="list-style-type: none"> • Quick filter change wrapper provides easy access to filter from front and side of cooler for convenient and efficient filter change in under a minute 	<ul style="list-style-type: none"> • Fill rate is 1.1 GPM. Laminar flow provides clean fill with minimal splash. Real drain system eliminates standing water
<ul style="list-style-type: none"> • Visual filter monitor with LED filter status indicator for when filter change is necessary 	<ul style="list-style-type: none"> • System automatically recognizes new filter and updates LED lights back to blue
<ul style="list-style-type: none"> • The included 6,000-gallon filter is tested and certified to NSF 42, 53 and 401 for lead, microplastics, Class 1 particulate, chlorine taste and odor reduction 	<ul style="list-style-type: none"> • Green Ticker™ informs user of number of 20 oz. plastic water bottles saved from waste
<ul style="list-style-type: none"> • Key plastic components are manufactured with silver ion antimicrobial agent helping to provide clean, stain- and odor-free surfaces 	<ul style="list-style-type: none"> • Low-energy LED light encourages use, assists with filling dark bottles and illuminates in dark hallways
<ul style="list-style-type: none"> • One-box packaging so the cooler and bottle filler ship together 	<ul style="list-style-type: none"> • Intuitive series of blue LED filter status lights accurately displays filter capacity, providing peace of mind to all users that system is properly filtering contaminants
	<p>*Antimicrobial claims are in reference to components manufactured antimicrobial agents, helping to provide clean, stain- and odor-free surfaces.</p>

Optional Accessories

51600C	<p>WaterSentry® Lead + Microplastics NSF/ANSI Certified 6000 Gal 12 Month Filter</p> <p>Spec Sheet (PDF)</p>	
LKAPREZL	<p>Cane Apron for EZ Gray</p> <p>Spec Sheet (PDF)</p>	
SSBFUP	<p>Universal Back Panel Assembly Kit for Single Coolers with Bottle Filler</p> <p>Spec Sheet (PDF)</p>	
MLP100	<p>In-wall Carrier for Single-station On-wall Bottle Fillers Coolers & Fountains</p> <p>Spec Sheet (PDF)</p>	
PLZSRK-W1	<p>Connected Retrofit Kit with Endpoint Board for Enhanced Filtration Bottle Filling Stations</p> <p>Spec Sheet (PDF)</p>	

In keeping with our policy of continuing product improvement, Elkay reserves the right to change product specifications without notice. Please visit elkay.com for the most current version of Elkay product specification sheets. This specification describes an Elkay product with design, quality, and functional benefits to the user. When making a comparison of other producers' offerings, be certain these features are not overlooked.

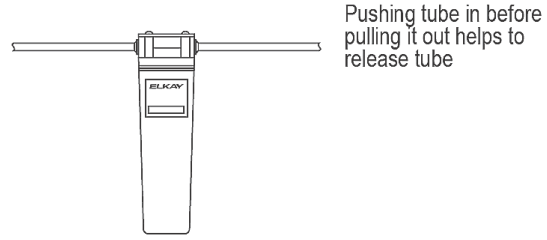
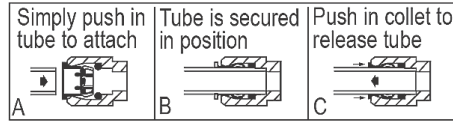
**IMPORTANT!
INSTALLER PLEASE NOTE :**

This water cooler has been designed and built to provide water to the user which has not been altered by materials in the cooler waterways. The grounding of electrical equipment such as telephone, computer, etc. to water lines is a common procedure. The grounding may be in the building but may also occur away from the building. This grounding can cause electrical feedback into a water cooler creating an electrolysis which creates a metallic taste or causes an increase in the metal content of the water. This condition is avoidable by installing the cooler using the proper materials as shown below.

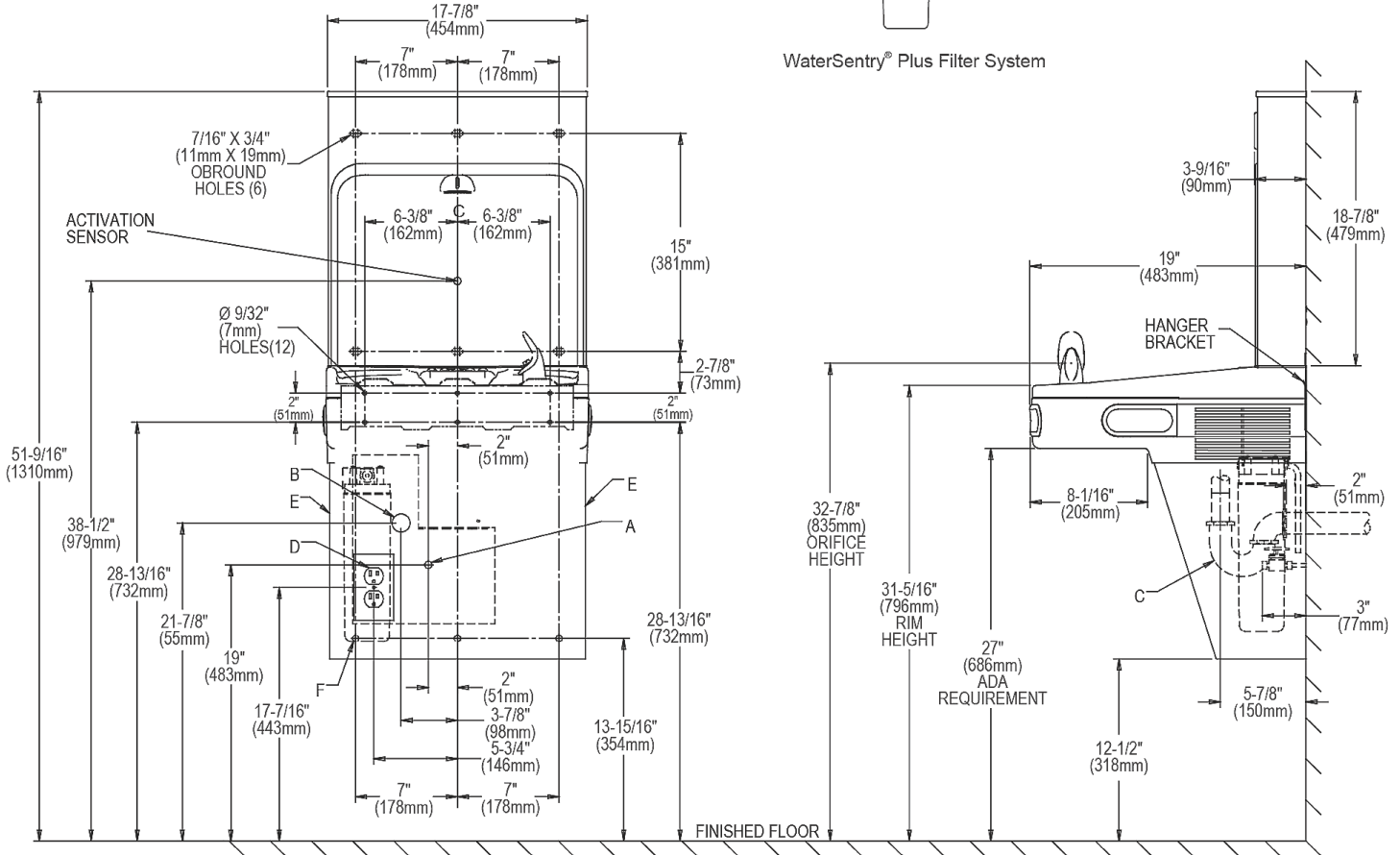
NOTICE

This water cooler must be connected to the water supply using a dielectric coupling. The cooler is furnished with a non-metallic strainer which meets this requirement. The drain trap which is provided by the installer should also be plastic to completely isolate the cooler from the building plumbing system.
Bottle filler unit on bracket attached to wall by 6 holes (as shown). Water and electrical will connect through pre-punched hole in basin.

OPERATION OF QUICK CONNECT FITTINGS



WaterSentry® Plus Filter System



REDUCE HEIGHT BY 3 INCHES FOR INSTALLATION OF CHILDRENS ADA COOLER

LEGEND:

- A = Recommended Water Supply location. Shut-off Valve (not furnished) to accept 3/8" O.D. unplated copper tube. Up to 3" (76mm) maximum out from wall.
 - B = Recommended Waste Outlet location. To accommodate 1-1/4" nominal drain.
 - C = 1-1/4" Trap (not furnished).
 - D = Electrical Supply (3) Wire Recessed Box Duplex Outlet.
 - E = Insure proper ventilation by maintaining 6" (152mm) minimum clearance from cabinet
 - F = 7/16" (11mm) Bolt Holes for fastening to wall.
- Note : New Installations Must Use Ground Fault Circuit Interrupter (GFCI).

In keeping with our policy of continuing product improvement, Elkay reserves the right to change product specifications without notice. Please visit elkay.com for the most current version of Elkay product specification sheets. This specification describes an Elkay product with design, quality, and functional benefits to the user. When making a comparison of other producers' offerings, be certain these features are not overlooked.