



PRODUCT SPECIFICATIONS

Elkay Pro Filtration™ Vandal-Resistant Connected Bottle Filling Station&Sgl ADA Cooler Refrig Ultra-Capacity Lead Rd SS. Chilling Capacity of 8.0 GPH (gallons per hour) of 50° F drinking water, based on 80° F inlet water and 90° F ambient, per ASHRAE 18 testing. Features shall include Alcove Light, Automatic Filter Flush, Automatic Filter Status Reset, Energy Savings, Filtered, Green Ticker™, Hands Free, Laminar Flow, Pro Filtration System, Real Drain, Stainless Steel Alcove, Top Mount Quick Filter Change, Visual Filter Monitor, Cloud Connected Device, Vandal Resistant, Tempered Glass Display Cover. Furnished with Vandal Resistant bubbler. Electronic Bottle Filler Sensor with Mechanical Front Bubbler Button activation. Product shall be Wall Mount (On Wall), for Indoor applications, serving 1 station(s).



Special Features:	Alcove Light, Automatic Filter Flush, Automatic Filter Status Reset, Energy Savings, Filtered, Green Ticker™, Hands Free, Laminar Flow, Pro Filtration System, Real Drain, Stainless Steel Alcove, Top Mount Quick Filter Change, Visual Filter Monitor, Cloud Connected Device, Vandal Resistant, Tempered Glass Display Cover
Finish:	Stainless Steel (S)
Power:	115V/60Hz
Bubbler Style:	Vandal Resistant
Activation by:	Electronic Bottle Filler Sensor with Mechanical Front Bubbler Button
Mounting Type:	Wall Mount (On Wall)
Chilling Capacity*:	8.0 GPH
Full Load Amps	5
Dimensions (L x W x H):	18-3/8" x 19" x 46-7/8"
Approx. Shipping Weight:	84 lbs.
Installation Location:	Indoor
No. of Stations Served:	1
*Based on 80° F inlet water & 90° F ambient air temp for 50° F chilled drinking water.	

Included with Product: Bottle Filler, Water Cooler, Ultra Capacity Filter

Ships in one box.
A Century of Tradition and Quality. For more than 100 years, Elkay has been making innovative products and providing exceptional customer care. We take pride in offering plumbing products that make life easier, inspire change and leave the world a better place.



PRODUCT COMPLIANCE

- ADA & ICC A117.1
- ASME A112.19.3/CSA B45.4
- CAN/CSA C22.2 No. 120
- FCC & ISED
- NSF/ANSI 42, 53, 61 (Q≤1), 372 (lead free), & 401
- UL 399



Complies with ADA & ICC A117.1 accessibility requirements when installed according to the requirements outlined in these standards. Installation may require additional components and/or construction features to be fully compliant. Consult the local Authority Having Jurisdiction if necessary.

[Installation Instructions \(PDF\) - 200002953](#)

5 Year Limited Warranty on the refrigeration system of the unit. Electrical components and water system are warranted for 12 months from date of installation. **Warranty pertains to drinking water applications only. Non-drinking water applications are not covered under warranty.**

[Warranty \(PDF\)](#)

Special Note: plumbSMART Gateway and Account required for cloud connection.

COOLING SYSTEM

- Compressor: Hermetically-sealed, reciprocating type, single phase. Sealed-in lifetime lubrication.
- Condenser: Fan cooled, copper tube with aluminum fins. Fan motor is permanently lubricated.
- Cooling Unit: Combination tube-tank type. Continuous copper tubing with is fully insulated with EPS foam that meets UL requirements for self-extinguishing material.
- Refrigerant Control: Refrigerant R-134a is controlled by accurately calibrated capillary tube.
- Temperature Control: Easily accessible enclosed adjustable thermostat is factory preset. Requires no adjustment other than for altitude requirements.

PART: _____ QTY: _____
 PROJECT: _____
 CONTACT: _____
 DATE: _____
 NOTES: _____ APP
 ROVAL: _____

In keeping with our policy of continuing product improvement, reserves the right to change product specifications without notice. Please visit for the most current version of product specification sheets. This specification describes product with design, quality, and functional benefits to the user. When making a comparison of other producers' offerings, be certain these features are not overlooked.



Model LVRC8WSPRO

Elkay Pro Filtration™ Vandal-Resistant Connected Bottle Filling Station&Sgl ADA Cooler Refrig Ultra-Capacity Lead Rd SS

TAG

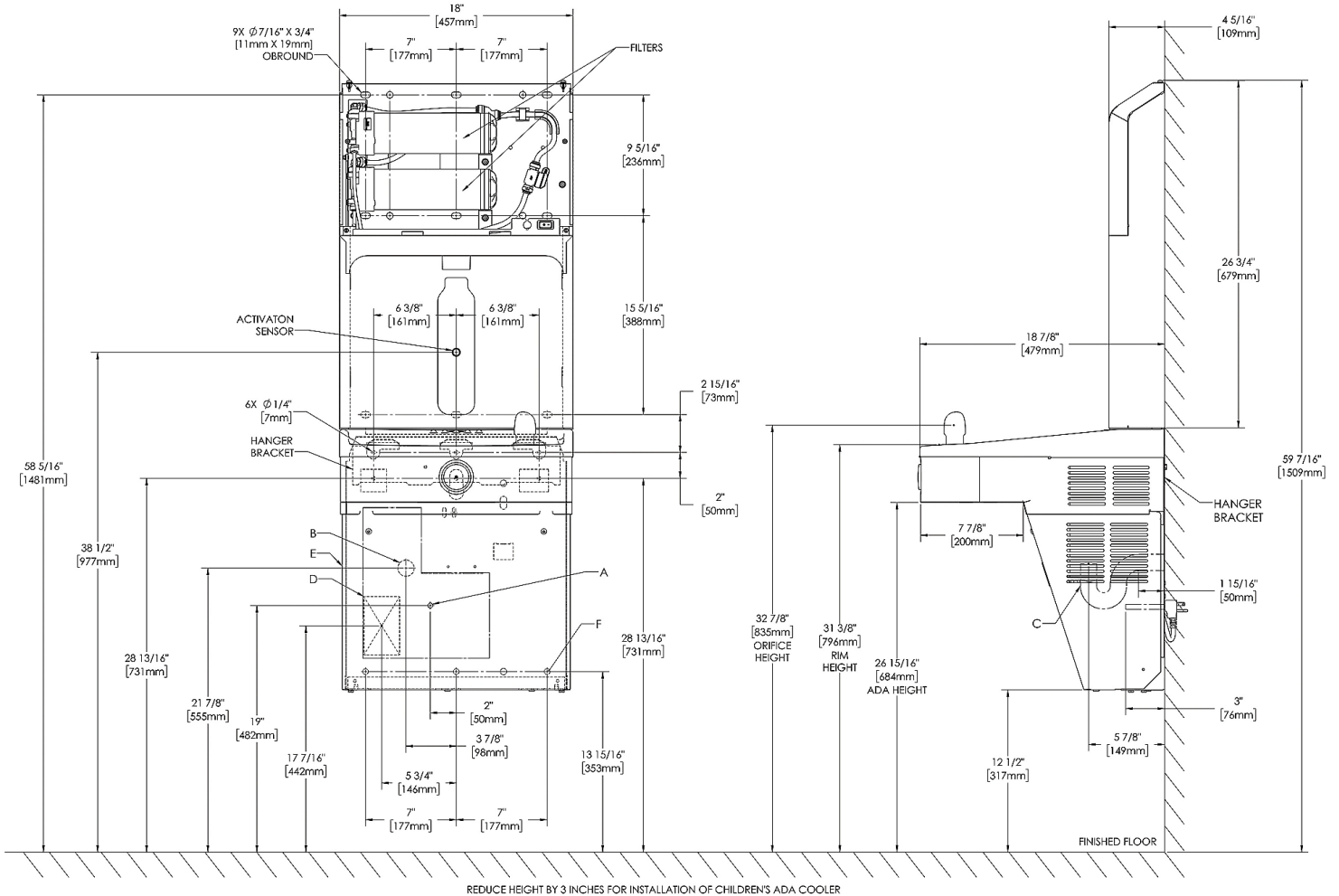
Features	
<ul style="list-style-type: none"> High-Performance System: Pairs exclusively with Elkay Pro Filtration filters to deliver safer drinking water 	<ul style="list-style-type: none"> Faster Filter Changes: Replace filters easily and more efficiently at the top of the unit
<ul style="list-style-type: none"> Save Time and Resources: Top of unit houses both a stage 1 sediment prefilter and long-lasting contaminant filter for simplified maintenance 	<ul style="list-style-type: none"> Ultra-Capacity Filter Included: Elkay Pro Filtration 10,000-gallon filter is tested and certified to NSF/ANSI 42, 53 and 401 to reduce lead, microplastics and more; ideal for high-traffic areas
<ul style="list-style-type: none"> Automatic Filter Recognition: Elkay Pro Filtration system recognizes new filter and automatically resets filter status lights, shortening installation time 	<ul style="list-style-type: none"> Automatic Filter Flushing: System detects newly installed filters and automatically flushes the system to shorten installation time and clean debris and air from the waterway
<ul style="list-style-type: none"> Never Miss a Filter Change: The intuitive blue LCD filter life gauge instills confidence in users who can easily see remaining filter capacity. 	<ul style="list-style-type: none"> Elevated Vandal-Resistant Design: Sleek stainless steel architectural design delivers innovative functionality with a modern, minimalist aesthetic
<ul style="list-style-type: none"> Smart Connected Units: Save time and resources when you track filter status, monitor performance, anticipate maintenance and flush the unit from anywhere. 	<ul style="list-style-type: none"> Sustainable Choice: Drink water sustainably; view number of 20-ounce plastic water bottles saved from waste and ounces dispensed on the unit's display
<ul style="list-style-type: none"> Energy and Cost Efficient: Hermetically sealed refrigeration system conserving energy and lowering operating costs 	<ul style="list-style-type: none"> Cleaner Basin: Real drain system eliminates standing water
<ul style="list-style-type: none"> Touchless Bottle Filling: Sensor-activated bottle filler delivers 20 ounces of water for an effortless, more hygienic experience 	<ul style="list-style-type: none"> Quick Fill: Bottle fill rate and filter flow rate match at 1.0 GPM for a quick fill, and laminar flow feature minimizes splash, while providing a clear stream of water
<ul style="list-style-type: none"> Stainless Steel Mechanical Design: Vandal-resistant mechanical push button operation for areas where an electric hookup isn't available 	

Filtration Options	Suffix	Description	Filters Included
Ultra-Capacity Filter	-	Elkay Pro Filtration 10,000-gallon filter is tested and certified to NSF/ANSI 42, 53 and 401 to reduce lead, microplastics and more; ideal for high-traffic areas	FL10
2 Ultra-Capacity Filter	-2FL10	Elkay Pro Filtration 10,000-gallon filters are tested and certified to NSF/ANSI 42, 53 and 401 to reduce lead, microplastics and more; ideal for high-traffic areas	(2) FL10
Total PFAS* Filter	-FLP4	Elkay Pro Filtration 4,000-gallon filter is tested and certified to NSF/ANSI 42, 53 and 401 to reduce Total PFAS, lead, microplastics and more (*Total PFAS as defined by NSF/ANSI 53)	FLP4
2 Total PFAS* Filter	-2FLP4	Elkay Pro Filtration 4,000-gallon filters are tested and certified to NSF/ANSI 42, 53 and 401 to reduce Total PFAS, lead, microplastics and more (*Total PFAS as defined by NSF/ANSI 53)	(2) FLP4
Sediment Prefilter	-FSR5	Elkay Pro Filtration Sediment Prefilter is certified by IAPMO R&T to NSF/ANSI 42 for material safety and structural integrity only, and to NSF/ANSI/CAN 372 for lead free compliance	FL10 + FSR5
UV	-UV	Elkay Pro Filtration 10,000-gallon filter is tested and certified to NSF/ANSI 42, 53 and 401 to reduce lead, microplastics and more; ideal for high-traffic areas. Units are equipped with a built-in UVC-LED at the dispense point	FL10

Optional Accessories		
FL6	Elkay Pro Filtration High-Capacity Lead + Microplastics 6000 gal. Filter	Spec Sheet (PDF)
FLP4	Elkay Pro Filtration Total PFAS* + Lead + Microplastics 4000 gal. Filter	Spec Sheet (PDF)
FL10	Elkay Pro Filtration Ultra-Capacity Lead + Microplastics 10000 gal. Filter	Spec Sheet (PDF)
FSR5	Elkay Pro Filtration Stage 1 Sediment Prefilter	Spec Sheet (PDF)
ZGW-LORA-W1-LTE	Zurn Gateway for Connected Enabled Products	Spec Sheet (PDF)
LKAPRVRS	Cane Apron for LVRC Pro Stainless Steel	Spec Sheet (PDF)

In keeping with our policy of continuing product improvement, reserves the right to change product specifications without notice. Please visit for the most current version of product specification sheets. This specification describes product with design, quality, and functional benefits to the user. When making a comparison of other producers' offerings, be certain these features are not overlooked.

<p>SSBFUP-PRO</p>	<p>Back Panel Assembly Kit for Single Coolers with Elkay Pro Filtration Bottle Filler</p>	<p>Spec Sheet (PDF)</p>
<p>MLP100</p>	<p>In-wall Carrier for Single-station On-wall Bottle Fillers Coolers & Fountains</p>	<p>Spec Sheet (PDF)</p>



REDUCE HEIGHT BY 3 INCHES FOR INSTALLATION OF CHILDREN'S ADA COOLER

LEGEND:

- A = Recommended Water Supply location. Shut-off Valve (not furnished) to accept 3/8" O.D. unplated copper tube. Up to 3" (76mm) maximum out from wall.
 - B = Recommended Waste Outlet location. To accommodate 1-1/4" nominal drain. Drain stub 2" (51mm) out from wall.
 - C = 1-1/4" Trap (not furnished).
 - D = Electrical Supply (3) Wire Recessed Duplex Outlet.
 - E = Insure proper ventilation by maintaining 6" (152mm) minimum clearance from cabinet louvers to wall.
 - F = 7/16" (11mm) Bolt Holes for fastening to wall.
- Note: New installations Must Use Ground Fault Circuit Interrupter (GFCI).

In keeping with our policy of continuing product improvement, reserves the right to change product specifications without notice. Please visit [www.elkay.com](#) for the most current version of product specification sheets. This specification describes product with design, quality, and functional benefits to the user. When making a comparison of other producers' offerings, be certain these features are not overlooked.