

PRODUCT SPECIFICATIONS

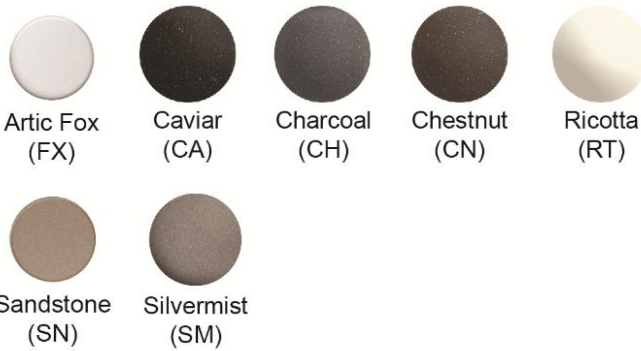
Quartz Luxe[®] 45" x 19" x 9" 60/40 Undermount Workstation Sink Kit with Perfect Drain and Aqua Divide. Proprietary manufacturing process that combines natural quartz with high performance UV-stable acrylic resins results in an impact resistant, nonporous and heat-, scratch-, stain- and fade-resistant surface. Naturally sound deadening and Center drain placement.

Installation Type:	Undermount
Material:	Quartz
Special Features:	Workstation SurePrep™ Aqua Divide Perfect Drain
Finish:	Arctic Fox (FX), Caviar (CA), Charcoal (CH), Chestnut (CN), Ricotta (RT), Sandstone (SN), Silvermist (SM)
Number of Bowls:	2
Sink Dimensions:	45" x 19" x 11"
Bowl 1 Dimensions:	16-9/16" x 17-1/16" x 9-1/2"
Bowl 2 Dimensions:	24-1/8" x 17-1/16" x 9-5/8"
Drain Size:	3-5/8" (92mm)
Drain Location:	Center
Minimum Cabinet Size:	48"
Cutout Template #:	2000002605

Template is available for download at [elkay.com](#). CAD software will be required to open the template.

Special Note: Reserve Selection products are sold exclusively, in-store and online, through authorized wholesalers.

Perfect Drain: Seamlessly molded collar eliminates the gap between a traditional drain and the sink for a more sanitary and gap free installation. Select garbage disposers can be installed on either sink bowl for user convenience. Please see our Garbage Disposer Compatibility Guide.



Included with Product: Custom Fit Bottom Grids and Cutting Boards, LKQLDR1117RUGR & LKDR0717SS
Drying Racks, LKQLDSCGR Shelf, LKC0717SS Colander, Drains, and LKCLKIT

A Century of Tradition and Quality.

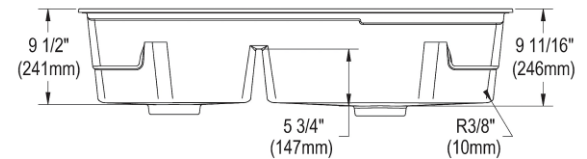
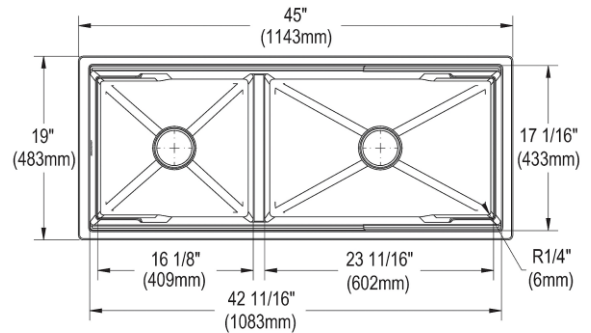
For more than 100 years, Elkay has been making innovative products and providing exceptional customer care. We take pride in offering plumbing products that make life easier, inspire change and leave the world a better place.

Product Compliance: CSA B45.5/IAPMO Z124
Accessory: ASME A112.18.2/CSA B125.2



Sinks are listed by IAPMO[®] as meeting the applicable requirements of the Uniform Plumbing Code[®], International Plumbing Code[®], and National Plumbing Code of Canada.

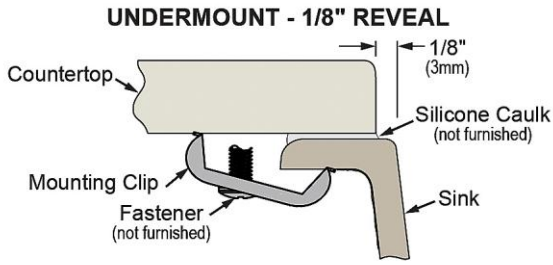
[Clean and Care Manual \(PDF\)](#)
[Installation Instructions \(PDF\) - 2000002604](#)
[Warranty \(PDF\)](#)



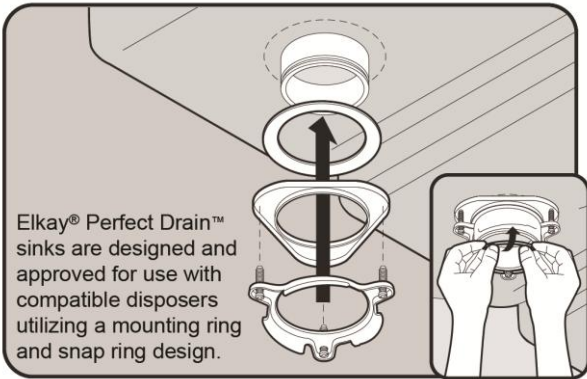
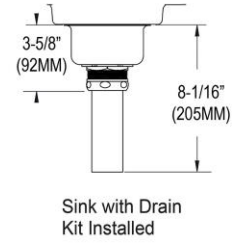
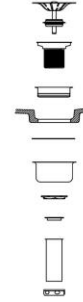
PART: _____ QTY: _____
 PROJECT: _____
 CONTACT: _____
 DATE: _____
 NOTES: _____
 APPROVAL: _____

In keeping with our policy of continuing product improvement, Elkay reserves the right to change product specifications without notice. Please visit [elkay.com](#) for the most current version of Elkay product specification sheets. This specification describes an Elkay product with design, quality, and functional benefits to the user. When making a comparison of other producers' offerings, be certain these features are not overlooked.

Installation Profile:



Designed to affix to the underside of any solid surface countertop.



In keeping with our policy of continuing product improvement, Elkay reserves the right to change product specifications without notice. Please visit elkay.com for the most current version of Elkay product specification sheets. This specification describes an Elkay product with design, quality, and functional benefits to the user. When making a comparison of other producers' offerings, be certain these features are not overlooked.