

PRODUCT SPECIFICATIONS

Halsey Taylor Outdoor Sierra Stone Fountain Wall Mount Non-Filtered Non-Refrigerated. Furnished with Vandal Resistant bubbler. Mechanical Front Bubbler Button activation. Product shall be Wall Mount (On Wall), for Outdoor applications, serving 1 station(s).

Finish:	Stone Aggregate
Power:	No Electrical Required
Bubbler Style:	Vandal Resistant
Activation by:	Mechanical Front Bubbler Button
Mounting Type:	Wall Mount (On Wall)
Chilling Capacity:	Non-refrigerated
Approx. Shipping Weight:	30 lbs.
Installation Location:	Outdoor
No. of Stations Served:	1

**When used in non-temperature controlled environments, unit(s) must be adequately winterized and/or protected from extreme heat to prevent damage where climates dictate.

- Mechanically-Activated unit continues to supply water in event of service disruptions.



Included with Product: Outdoor Fountain
Ships in one box.

A Century of Tradition and Quality.

For more than 100 years, Elkay has been making innovative products and providing exceptional customer care. We take pride in offering plumbing products that make life easier, inspire change and leave the world a better place.

**PRODUCT COMPLIANCE**

ASME A112.19.3/CSA B45.4

Buy American Act

NSF/ANSI 61 (Q₁) & 372 (lead free)



[Installation Instructions \(PDF\) - 97215C](#)

Warranty pertains to drinking water applications only. Non-drinking water applications are not covered under warranty.

[Warranty \(PDF\)](#)

PART: _____ QTY: _____

PROJECT: _____

CONTACT: _____

DATE: _____

NOTES: _____

APPROVAL: _____

In keeping with our policy of continuing product improvement, reserves the right to change product specifications without notice. Please visit [www.elkay.com](#) for the most current version of product specification sheets. This specification describes product with design, quality, and functional benefits to the user. When making a comparison of other producers' offerings, be certain these features are not overlooked.

MOUNTING INSTRUCTIONS

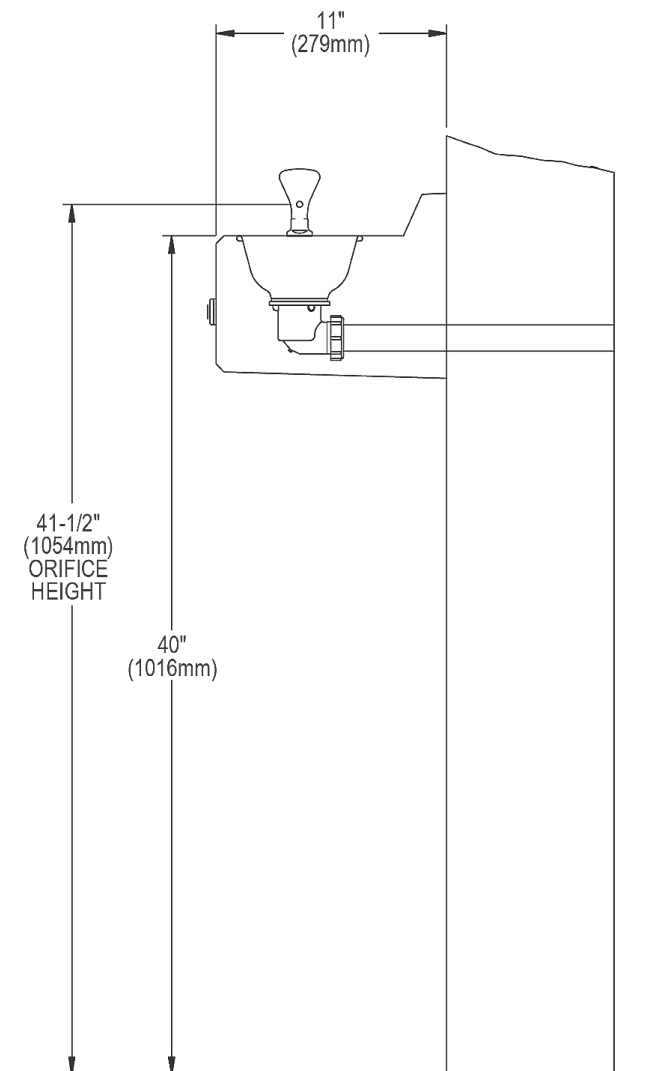
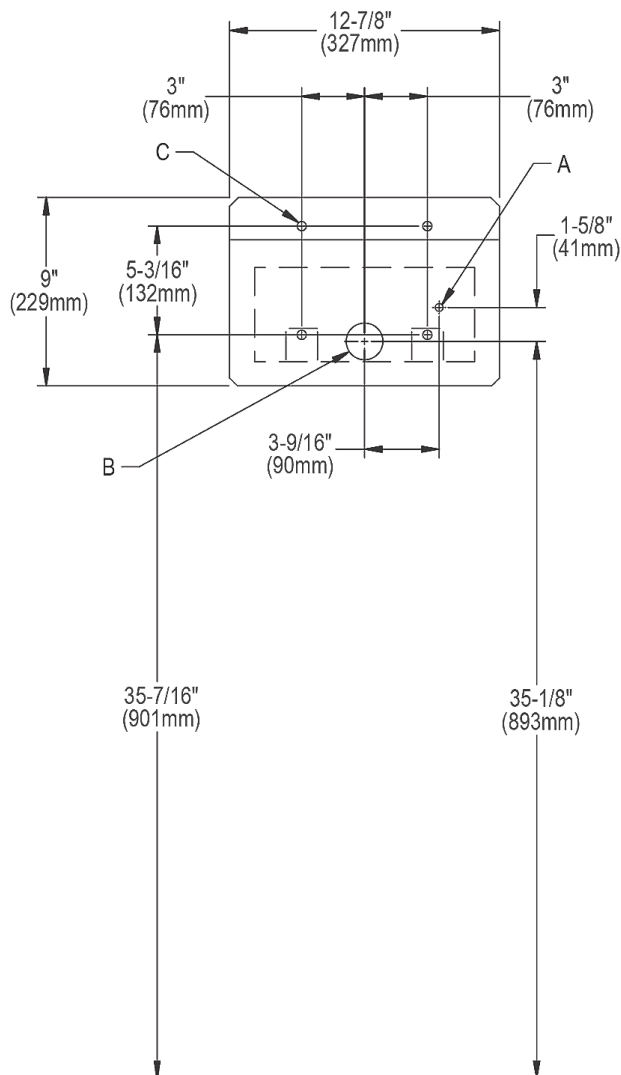
Refer to diagrams for rough-in of plumbing.
For wall support required locations see installation instructions provided with fountain. Bolt fountain securely to wall per installation instructions.
Water supply and waste line are to be assembled as required. Final check for leaks and correct functions of fountain should be made.
(For details see the installation instructions.)

Installation requires trap to be installed in wall. A service supply stop must be installed at the fountain inlet line. Trap and service stop not included.

CAUTION – Fountain must be securely bolted to wall

OPERATING PRESSURES

Supply water-105 psi maximum



LEGEND:

A: Recommended water supply location, 3/8" O.D. unplated copper tube connect stub 1-1/2" (38mm) out from wall shut off valve by others.

B: Recommended location for waste outlet, 1-3/4" O.D. (44mm) drain.

C: (4) 5/16" (8mm) Dia. mounting holes.

Important: For recommended wall support see installation instructions provided with panel and fountains.