

Mounting Plate Instructions

Model MPW100

Installer

To assure you install this model easily and correctly, PLEASE READ THESE SIMPLE INSTRUCTIONS BEFORE STARTING THE INSTALLATION. CHECK YOUR INSTALLATION FOR COMPLIANCE WITH PLUMBING, ELECTRICAL AND OTHER APPLICABLE CODES. After installation, keep these instructions for future reference.

IMPORTANT

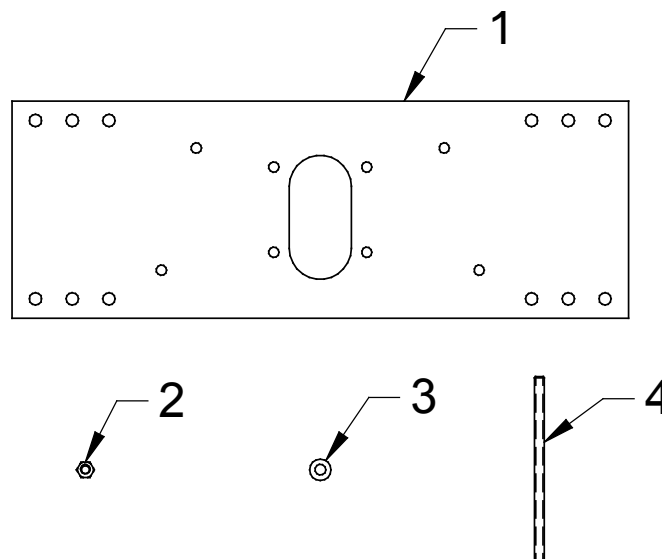
ALL SERVICE TO BE PERFORMED BY AN AUTHORIZED SERVICE PERSON

**This Mounting Plate System is designed for use
with the single OVL II™ Series.**

Parts List

Refer to the illustration to make sure you receive all mounting plate parts. If any parts are missing, please call our Customer Care at 1.800.476.4106.

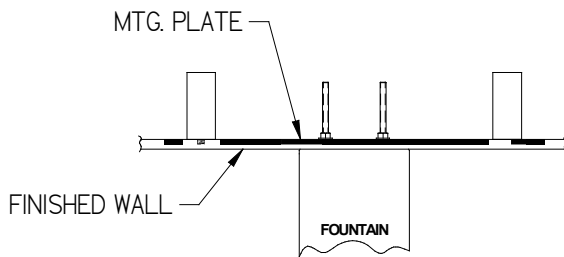
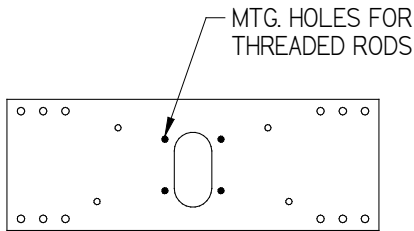
ITEM NO.	QTY.	PART NO.	DESCRIPTION
1	1	28791C	Mounting Plate
2	16	70020C	Hex Nut 5/16-18
3	16	75541C	Flat Washer .339/.359ID
4	4	75708C	Threaded Rod 5/16-18 x 6 In.



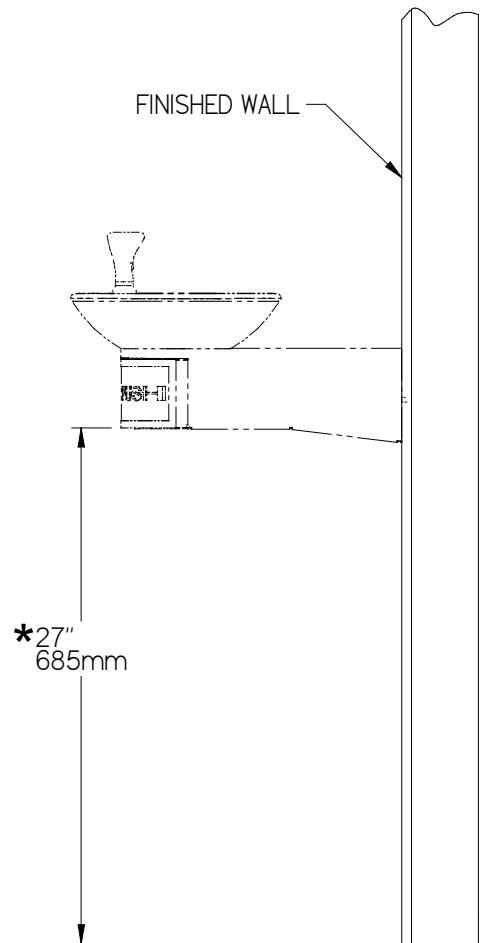
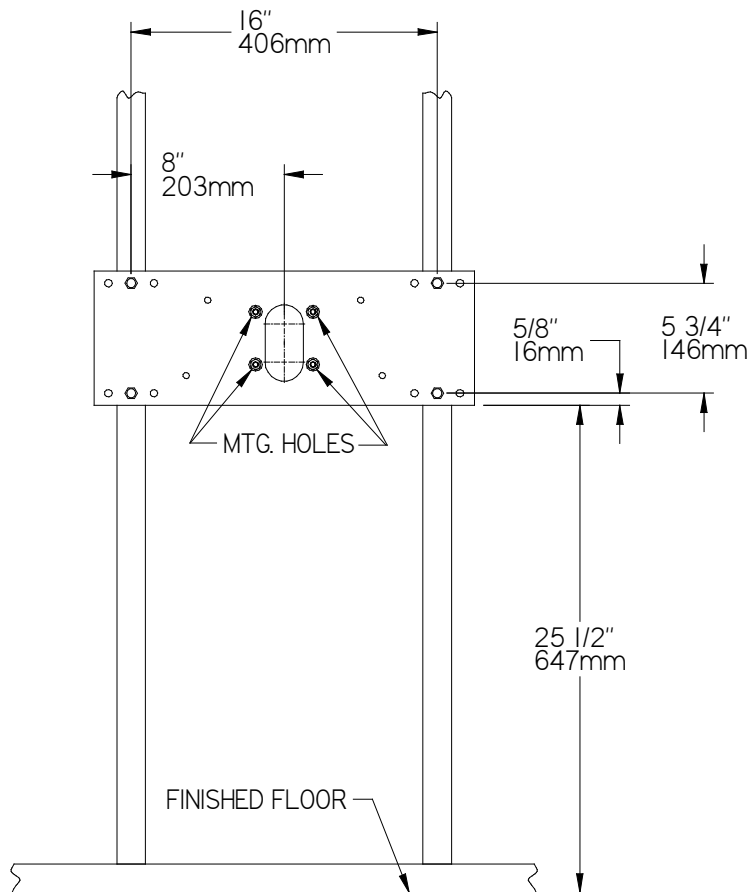
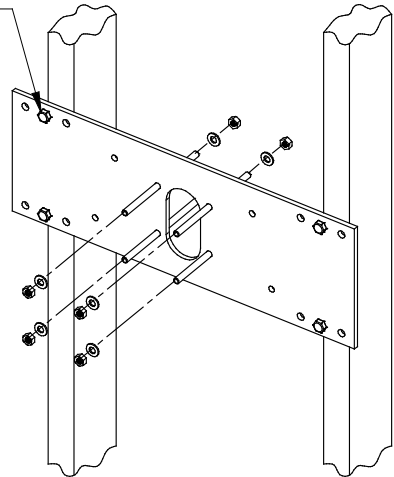
MPW100

OVL II™ Series

When mounting plate directly to wall studs please refer to the diagrams shown below. For electrical, waste, and water supply locations please refer to the Installation/Owners Manual for the specific unit.



3/8" MTG. HARDWARE
(SUPPLIED BY OTHERS)



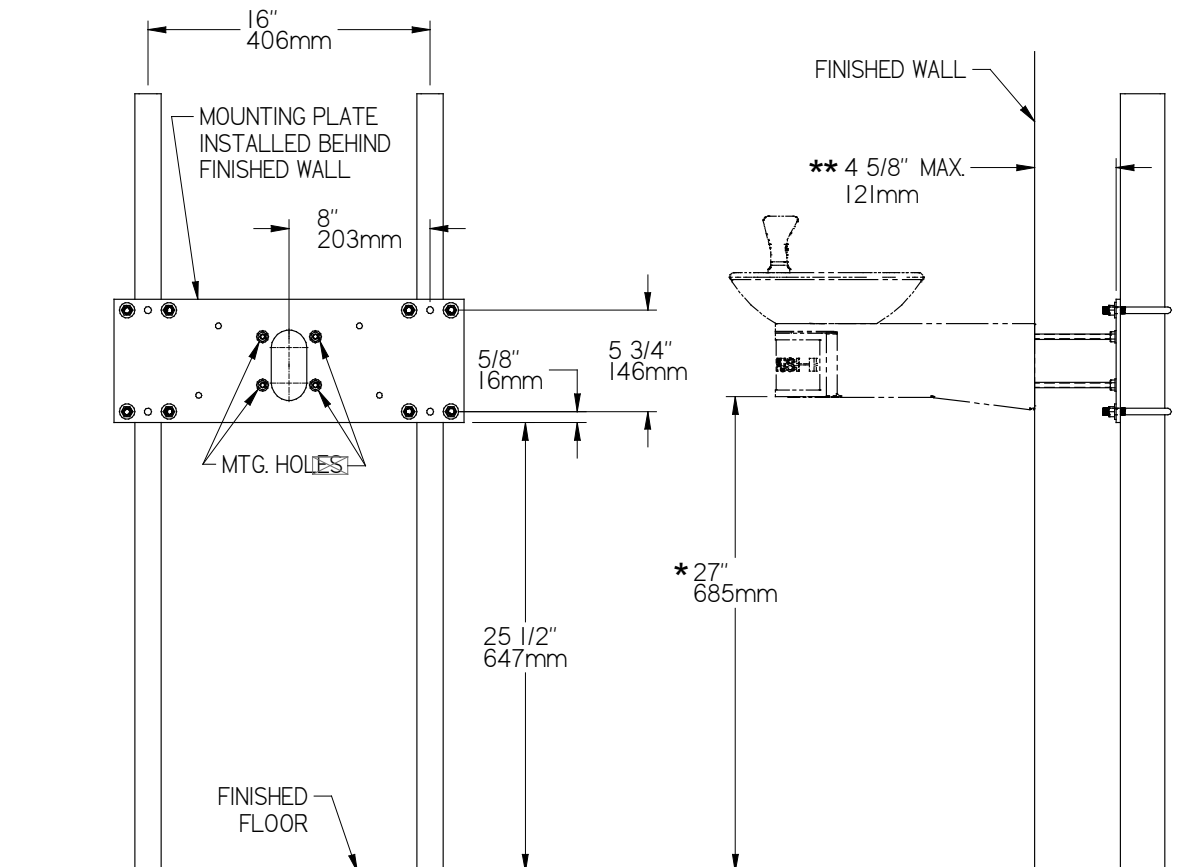
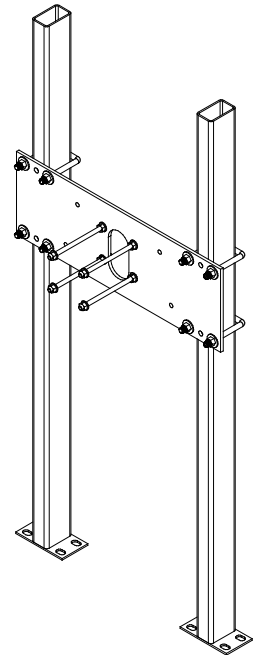
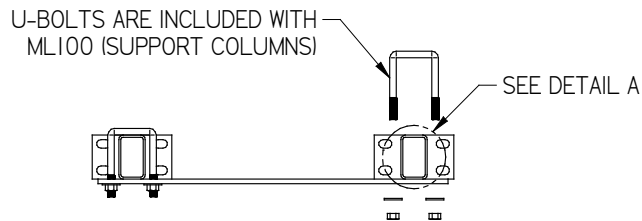
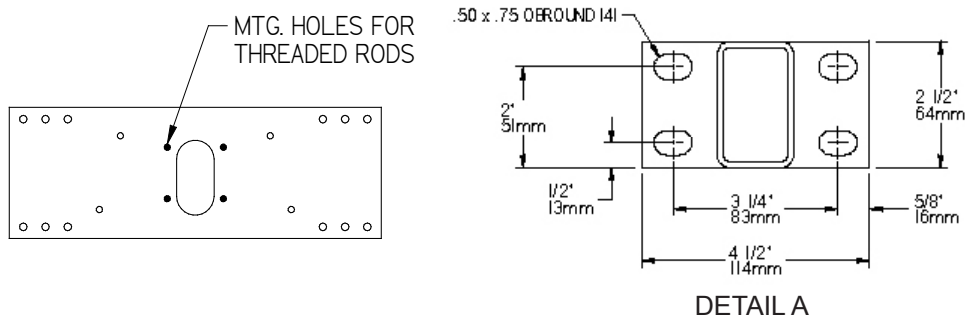
* ADA REQUIREMENT

NOTE - AFTER INSTALLATION, THREADED RODS MAY NEED TO BE TRIMMED.

MPW100

OVL II™ Series

When using mounting plate with ML100 (Support Columns) please refer to the diagrams shown below. For electrical, waste, and water supply locations please refer to the Installation/Owners Manual for the specific unit.



* ADA REQUIREMENT

** WITH STANDARD STUD LENGTH OF 6 INCHES.

NOTE - AFTER INSTALLATION, U-BOLTS AND THREADED RODS MAY NEED TO BE TRIMMED.

For Technical Service, please contact us at 800.476.4106