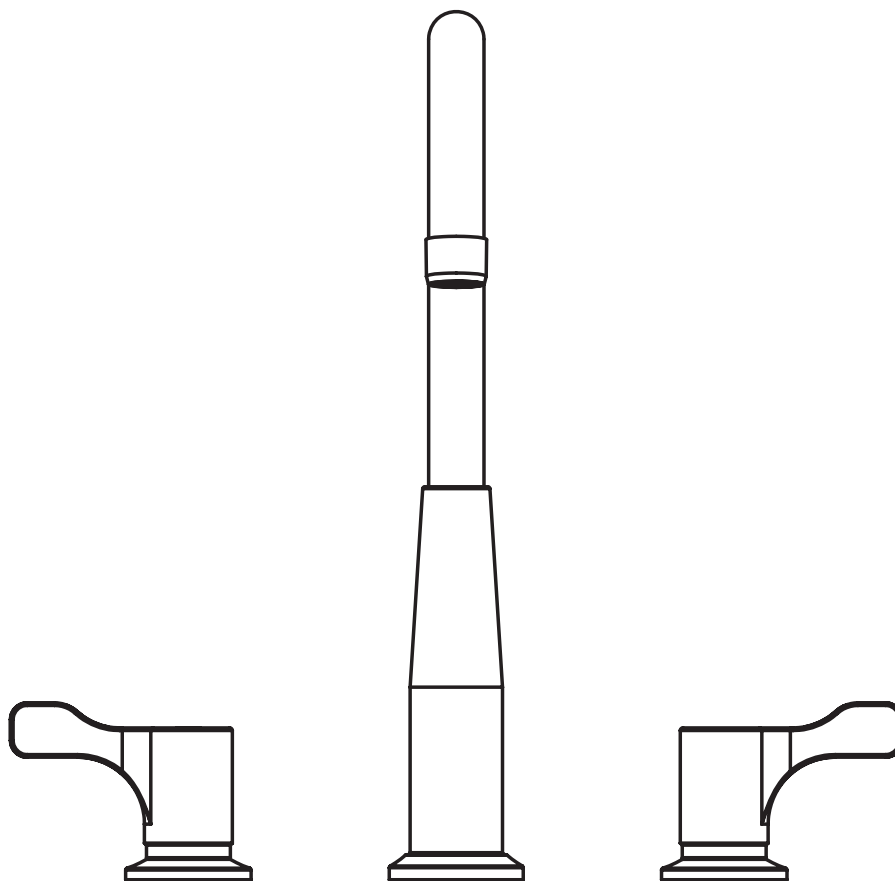




## Installation Instructions for Undermount Two-Handle Faucet



**SAVE FOR CONSUMER**

ELKAY . 1333 BUTTERFIELD ROAD SUITE 200 DOWNERS GROVE, IL 60515 USA

## **General Instructions**

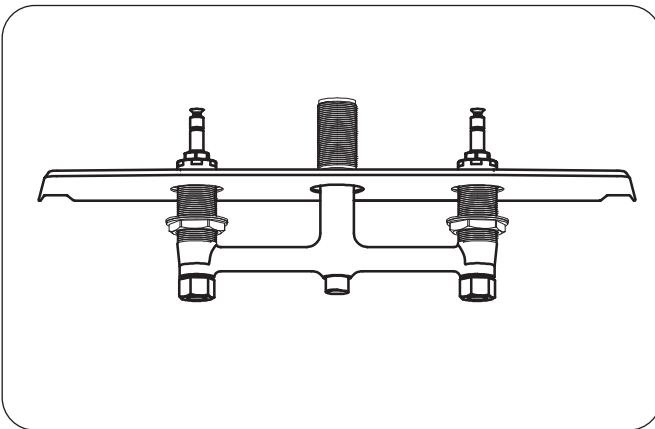
1. Turn off the water supply at the main source.
2. Hand tighten all parts prior to tightening with wrench. Do not over tighten the parts.
3. Handle plated surfaces with care, being careful not to scratch with tools.

## **Install Spray and Hose (if included)**

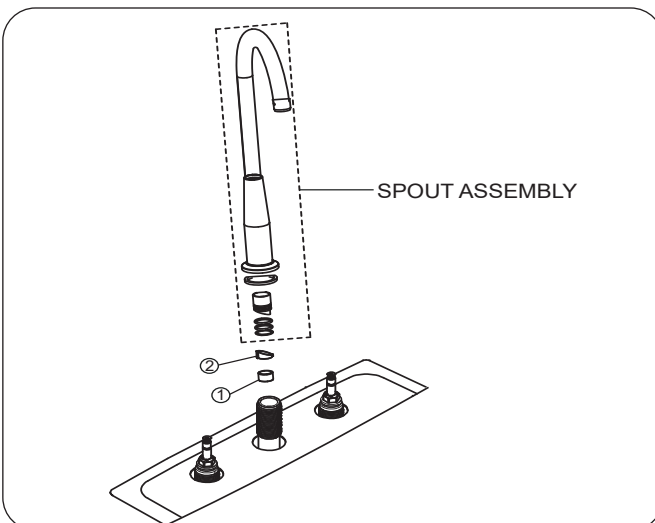
1. Remove locknut and washer from sprayer base assembly and place assembly in far right hole of sink deck. Reassemble washer and locknut on shank from under sink and tighten.
2. Insert hose through sprayer base assembly then route back up through the center hole for the faucet. Thread hose onto faucet and tighten.

## **Installation Steps**

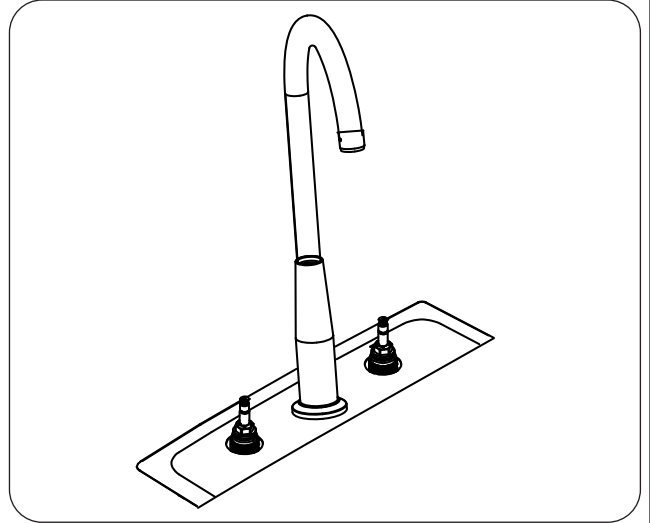
1. Be sure mounting surface is clean and dry.
2. Prepare waterway; Make sure handles, cartridge nuts and flanges are removed and the locknuts are threaded down to the bottom.
3. From under sink, insert waterway assembly up through sink faucet drillings.



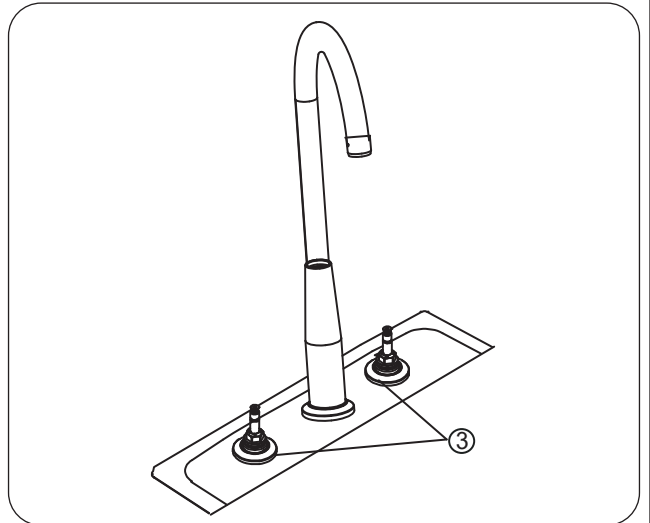
4. Place spacer ring (1) and wedge (2) inside waterway spout connector. (See change faucet rotation procedure).



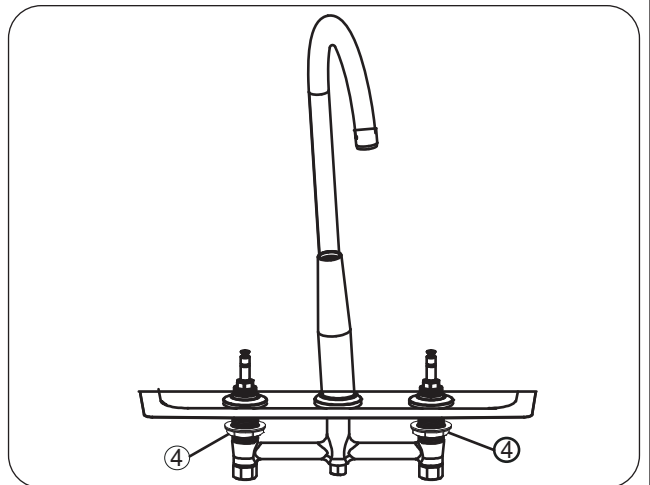
5. Thread spout assembly on waterway and hand tighten. Tighten spout assembly all the way down on waterway until it no longer spins.
6. Set spout escutcheon down on sink.



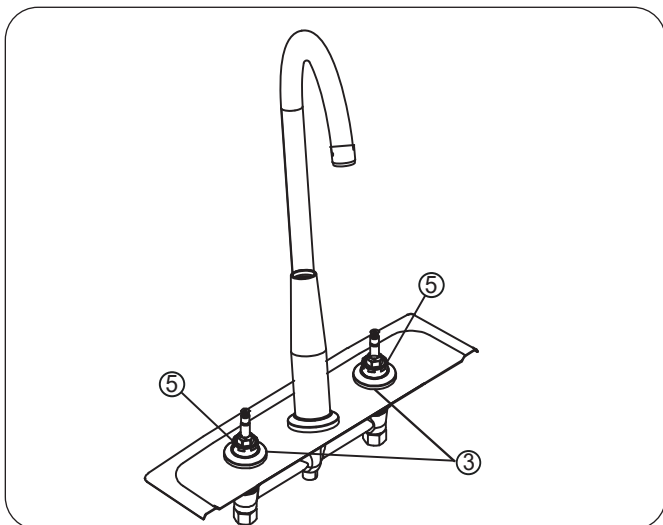
7. Install flanges (3) until they thread and touch the sink. (Turning them further will cause spout to raise causing gap).



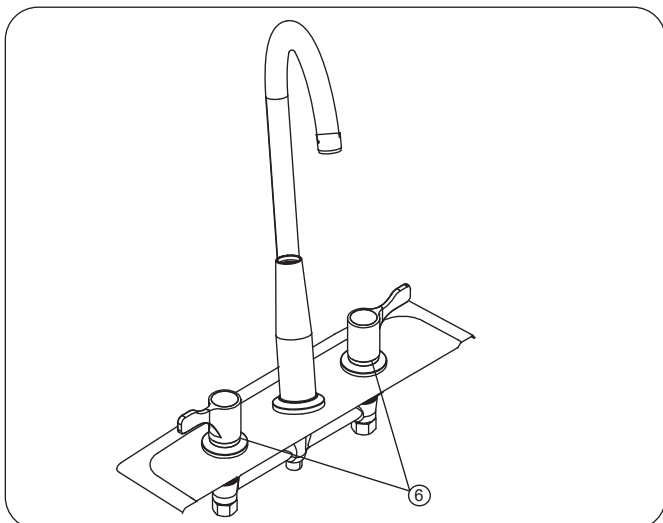
8. From under sink, tighten locknuts (4) against sink.



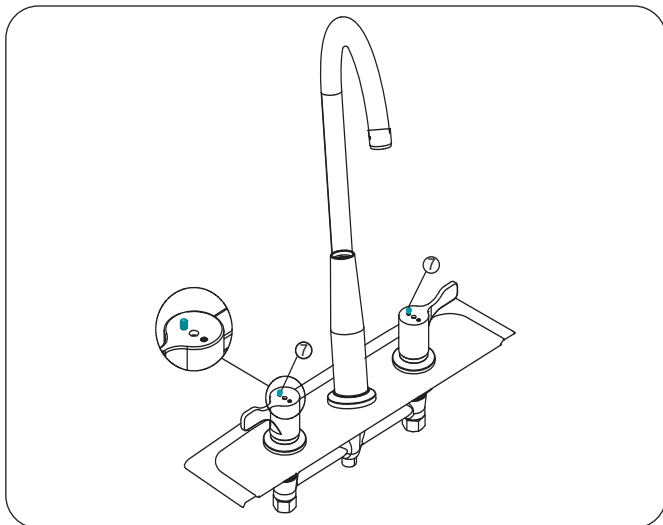
9. Thread cartridge nuts (5) onto cartridges and tighten



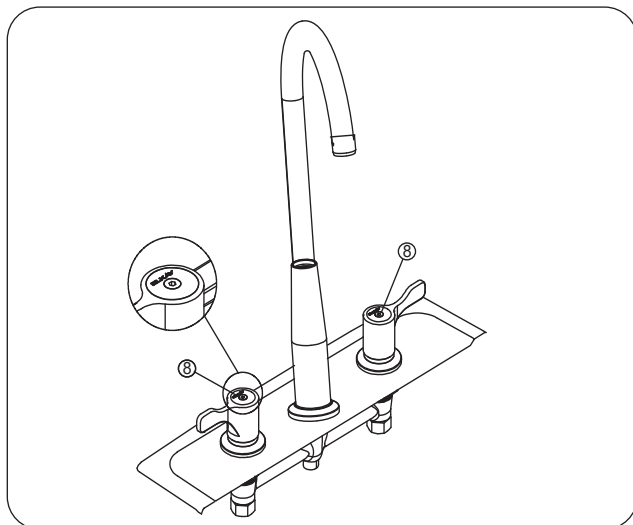
11. Install handles (6) over cartridge stem.



12. Insert alignment screw in handle hole towards back of sink. Screw in only half way.



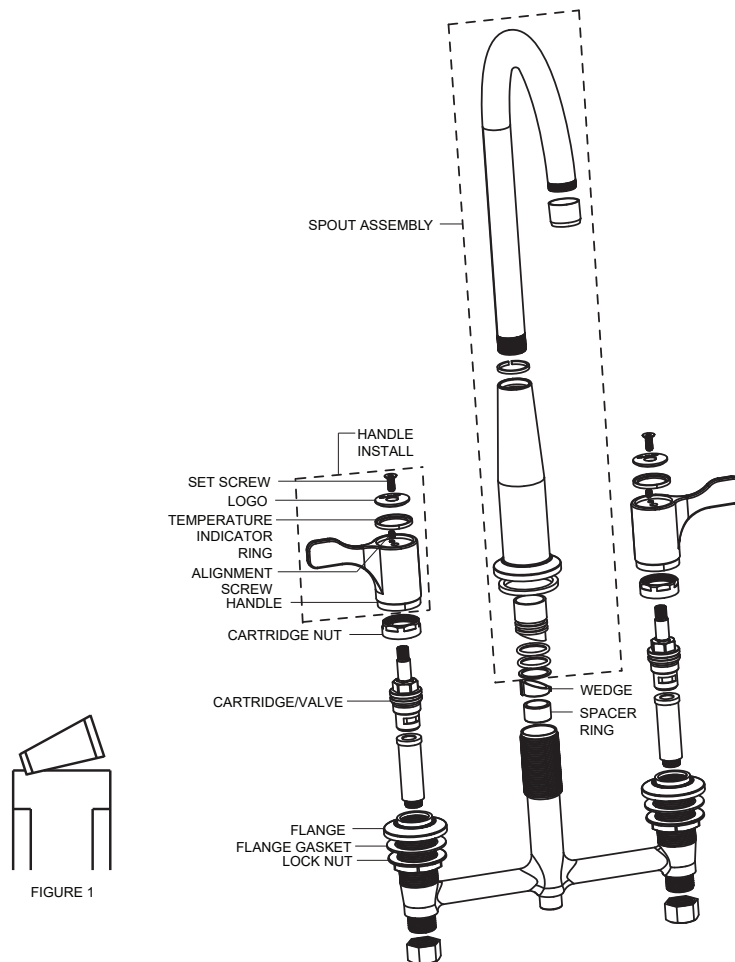
13. Place red temperature indicator ring in the top of the hot side handle and the blue ring in the top of the cold side handle. (Fully counter clockwise for cold and fully clockwise for hot.)
14. Place logo part in top of both handles so logo can be read from front of sink.
15. Thread handle set screw (8) into each handle and tighten.



16. Connect supply lines to faucet shanks and tighten.
17. Remove aerator from spout and flush water lines to remove dirt and sediment from water lines. Replace aerator.

### **Change Faucet Rotation**

1. Unscrew spout and pull upward to remove.
2. Using a finger, reach inside the waterway and pull out the wedge and spacer ring.
3. Select the spacer ring with the desired rotation and insert into waterway.
4. Install the wedge into the waterway, making sure to align the two different size "keys" (slots) inside the waterway with those on the wedge. (It would help to use long nose pliers to seat the wedge, however, placing the wedge on a finger and guiding it into the waterway also works.) Angle small side of wedge to contact key slot first. Rest wedge in place on spacer ring. See FIGURE 1.
5. Make sure the white wear ring is seated around the base of the spout. Push the spout straight into the waterway, aligned 90° from handles.
6. Thread spout base onto waterway and rotate the spout several degrees left and right while hand tightening.



## **WARRANTY**

### **ELKAY LIMITED LIFETIME FAUCET WARRANTY ON RESIDENTIAL FAUCETS**

#### **Limited Lifetime Functional and Finish Warranty**

Elkay warrants to the original consumer purchaser that the Elkay faucet purchased will be free from defects in material and workmanship for as long as the original consumer purchaser owns the faucet. Elkay will, at its option, supply replacement parts (or if no longer available a comparable product) if the faucet fails due to a defect in material or workmanship. This warranty does not apply in the event of product surface damage caused by abuse, misuse or improper care and maintenance. This warranty excludes damage caused by harsh or abrasive cleaners and/or materials. This warranty excludes all industrial, commercial and business use, whose purchasers are hereby extended a limited lifetime on mechanical parts and 5 years on finish. Product replacement does not include transportation cost or labor installation cost. Elkay reserves the right to examine product in question and its installation prior to replacement.

#### **OTHER WARRANTY CONDITIONS ON FAUCETS**

Our warranty does not cover product failure or damage caused by abusive treatment, misuse, environmental factors, improper care and cleaning, or damage due to handling or faulty installations. This warranty is extended only to the original consumer purchaser of the product. This warranty does not cover shipping costs, labor costs, or any other charges for such items as installation or replacement of the sink, diagnosis or replacement of any faucet or component part, or any other expense or loss.

**All incidental or consequential damages are specifically excluded. No additional warranties, express or implied are given. Any implied warranty, including one of merchantability or fitness for a particular purpose, is limited to the duration of this written warranty.**

Some states do not allow the exclusion or limitation of incidental or consequential damages or limitations on how long an implied warranty lasts, so the above limitations or exclusions may not apply to you. This warranty gives you specific legal rights, and you may also have other rights which vary from state to state.

#### **TO OBTAIN SERVICE UNDER WARRANTY**

1. Write to: Elkay  
Attention: Consumer Services  
1333 Butterfield Road Suite 200  
Downers Grove, IL 60515 USA
2. Include a letter containing the following information:
  - a. Date of purchase and installation.
  - b. Description of nature of defect.
  - c. Model number or description of model and/or component part if possible.