

PRODUCT SPECIFICATIONS

Elkay Soft Sides Bi-Level Composite Fountain Non-Filtered White Granite Composite. Furnished with Flexi-Guard® Safety Bubbler. Mechanical Front Bubbler Button activation. Product shall be Wall Mount (On Wall), for Indoor + Outdoor applications, serving 2 station(s). Unit shall be lead-free design which is certified to NSF/ANSI 61 & 372 (lead free) and meets Federal and State low-lead requirements.

| | |
|--|---------------------------------|
| Finish: | White Granite Composite (WH) |
| Power: | No Electrical Required |
| Bubbler Style: | Flexi-Guard® Safety Bubbler |
| Activation by: | Mechanical Front Bubbler Button |
| Mounting Type: | Wall Mount (On Wall) |
| Chilling Capacity: | Non-refrigerated |
| Dimensions (L x W x H): | 37-3/4" x 18-1/16" x 7-7/8" |
| Approx. Shipping Weight: | 70 lbs. |
| Installation Location: | Indoor + Outdoor |
| No. of Stations Served: | 2 |
| **When used in non-temperature controlled environments, unit(s) must be adequately winterized and/or protected from extreme heat to prevent damage where climates dictate. | |

- Mechanically-Activated unit continues to supply water in event of service disruptions.
- With a contemporary look and smooth, rounded lines, these wall mounted drinking fountains are constructed of a premium composite, solid surface material.



Included with Product: Fountain Ships in one box.

A Century of Tradition and Quality. For more than 100 years, Elkay has been making innovative products and providing exceptional customer care. We take pride in offering plumbing products that make life easier, inspire change and leave the world a better place.



PRODUCT COMPLIANCE

ADA & ICC A117.1

Buy American Act



Complies with ADA & ICC A117.1 accessibility requirements when installed according to the requirements outlined in these standards. Installation may require additional components and/or construction features to be fully compliant. Consult the local Authority Having Jurisdiction if necessary.

[Installation Instructions \(PDF\) - 97296C](#)

Water Systems are warranted for 12 months from date of installation. **Warranty pertains to drinking water applications only. Non-drinking water applications are not covered under warranty.**

[Warranty \(PDF\)](#)

PART: _____ QTY: _____

PROJECT: _____





CONTACT: _____

DATE: _____

NOTES: _____

APPROVAL: _____

In keeping with our policy of continuing product improvement, reserves the right to change product specifications without notice. Please visit [www.elkay.com](#) for the most current version of product specification sheets. This specification describes product with design, quality, and functional benefits to the user. When making a comparison of other producers' offerings, be certain these features are not overlooked.

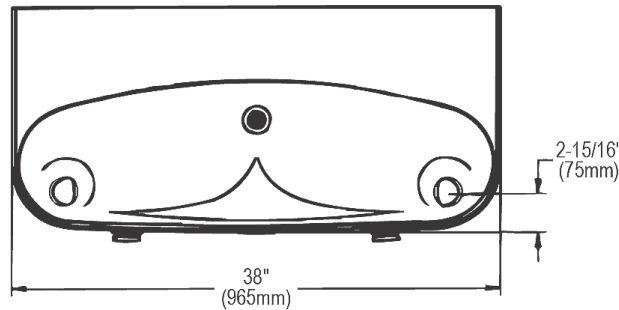
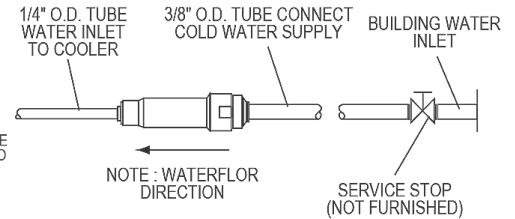
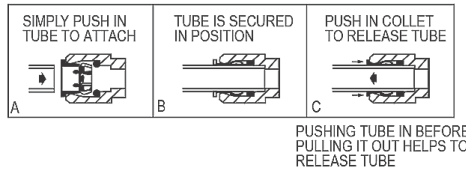
| Optional Accessories | | |
|-------------------------------|---|---|
| AP99 | Elkay Access Panel 9" x 9" x 6" Spec Sheet (PDF) |  |
| ACCESS12X38-5 | Stainless Steel Access Panel for Bi-Level Architectural Fountains Spec Sheet (PDF) |  |
| 97446C | Bubbler Kit Vandal-Resistant Spec Sheet (PDF) |  |
| EWF172 | Elkay® Universal Filtration Kit (1500-Gallon) Spec Sheet (PDF) |  |

In keeping with our policy of continuing product improvement, reserves the right to change product specifications without notice. Please visit [elkay.com](#) for the most current version of product specification sheets. This specification describes product with design, quality, and functional benefits to the user. When making a comparison of other producers' offerings, be certain these features are not overlooked.

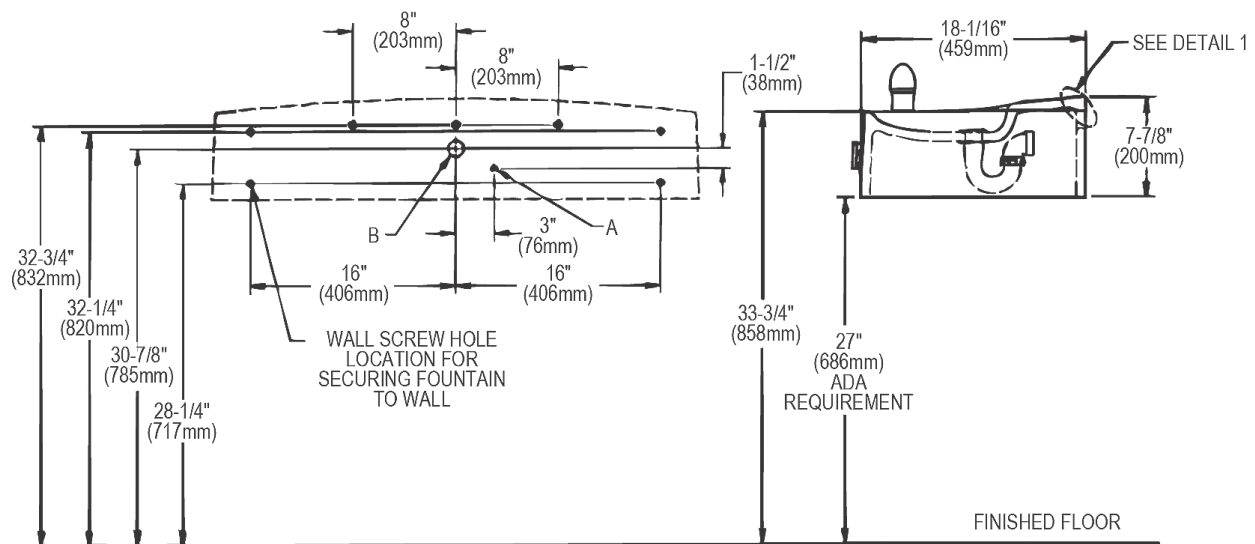
INSTALLER NOTE

This drinking fountain is furnished with a bubbler and valve including all connecting fittings which are manufactured of completely lead free material. Shut off valve (not furnished) to accept 3/8" O.D. unplated copper tube.

OPERATION OF QUICK CONNECT FITTINGS



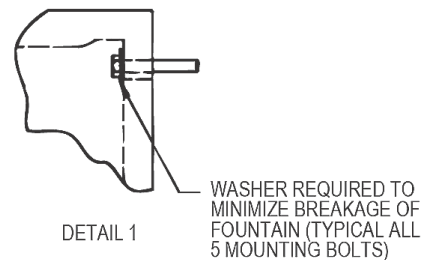
WALL LAYOUT



LEGEND

A = 3/8" O.D. tube connect - shut off valve by others
B = Water outlet 1-1/4" O.D. drain-stub out from wall 1" (25mm)

1-1/4" Trap provided.



In keeping with our policy of continuing product improvement, reserves the right to change product specifications without notice. Please visit www.elkay.com for the most current version of product specification sheets. This specification describes product with design, quality, and functional benefits to the user. When making a comparison of other producers' offerings, be certain these features are not overlooked.