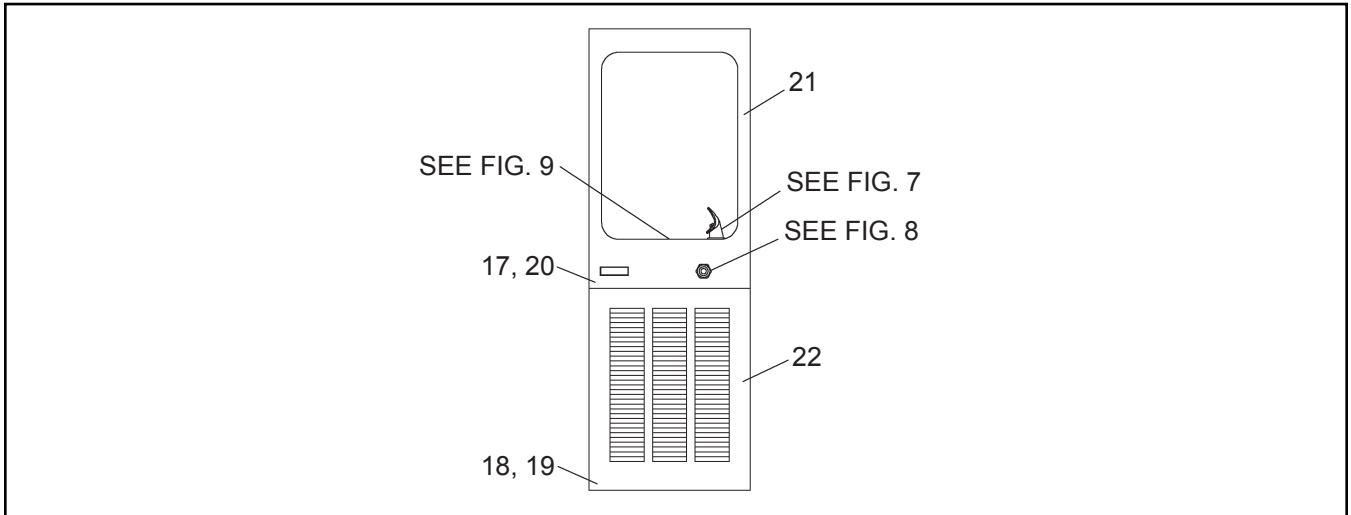


# Installation / Care / Use Manual

*Original Instructions*

**Model: EFRCM122FKWR**



## Description

Refrigerated bottle filling station delivers chilled, clean potable drinking water with push button activated water flow. Recessed, in-wall mounting frame houses the remote chiller and provides a means for mounting bottle filler.

## Ratings

- Electrical: 220Vac, 50Hz, (See Nameplate for Amperage), 1 phase.
- Ambient Air Temperature: 50-100.4 °F (10-38 °C).
- Water Pressure: 20-100 psig (0.14-0.69 MPa).
- Maximum Water Temperature: 90 °F (32 °C).
- Ingress Protection: IP2x
- Refrigerant: HFC-R134a
- Four Indoor Commercial Use Only

## Definitions

**DANGER** – Indicates death or serious injury will result if proper precautions are not taken.

**WARNING** – Indicates death, serious injury or property damage can result if proper precautions are not taken.

**CAUTION** – Indicates some injury or property damage may result if proper precautions are not taken.

**Authorized Service Personnel** – Factory trained personnel or personnel having working knowledge of electrical, plumbing, and machine (appliance) maintenance procedures.

## Safety

### DANGER

- Please read these instructions completely before starting the installation or performing any service. Failure to follow the instructions and safety precautions in this manual can result in serious injury or death.
- After installation, keep these instructions in a safe location for future reference.
- Electric supply must be identical in voltage, cycle, and phase to that specified on nameplate.
- Electrical supply must have Ground Fault Circuit Interrupter (GFCI) protection.
- A means for disconnecting electrical supply to the unit must be incorporated in the fixed wiring in accordance with wiring rules. This is to allow electrical disconnecting of the unit from electrical supply after installation.

### WARNING

- For use with clean, clear potable drinking water only. Do not use with water that is microbiologically unsafe or of unknown quality without adequate disinfection before the system.
- Installation and connection to water and electrical mains must be in compliance with local and national laws.
- All Installation and Service work must be performed by an authorized service personnel.

### CAUTION

- This appliance can be used by children aged from 8 years and above and persons with reduced physical, sensory, or mental capabilities or lack of experience and knowledge if they have been given supervision or instructions concerning use of the appliance in a safe way and understand the hazards involved. Children shall not play with the appliance. Cleaning and user maintenance shall not be made by children without supervision.
- To prevent a metallic taste or increased metal content in the water due to an electrolysis process caused by electrical feedback from the grounding of electrical equipment to water supply and water waste mains, connect to these mains using non-conductive materials. The provided solenoid valve regulator assembly meets this requirement.

## Installation

For correct and safe installation, please read these instructions completely.

### **DANGER**

- All Installation work must be performed by an authorized service personnel.
- Disconnect electrical supply serving the Installation area to reduce risk of electrocution.
- Unit not suitable for installations where water jets could be used.

### **WARNING**

- Shut off water supply serving the Installation area to reduce risk of water damage.
- Ensure proper ventilation by maintaining clearance from cabinet louvers to wall on each side of Cooler as specified in installation instructions.
- Never wire compressor directly to electrical supply.
- Thoroughly flush all water lines and fittings of all foreign matter before connecting to Cooler.
- Warranty is void if Installation is not made in accordance with current Manufacturing instructions.

### **CAUTION**

- Hose-sets are not to be used for connecting to water mains.
- If inlet pressure is above 100 psig (0.69 MPa), a pressure regulator must be installed in water supply line. Any damage caused by reason of connecting this product to water supply line pressure outside it's rated pressure, is not covered by warranty.
- Tools/Items required but not provided:
  - Water Shut-off Valve with 3/8" (9.5mm) compression outlet.
  - Safety Glasses
  - Protective Gloves
  - 5/16" (8mm) Hex Socket or Flathead Screwdriver

## Installation

1. Remove shipping brace from mounting box and discard.
2. Fasten mounting box into wall cutout using screws or bolts (provided by others) through the holes or knock outs provided on each side of the mounting box. (See Fig. 1)
3. Install fountain body to mounting box using #10 x .63" (16mm) PHSM screws and large clips provided.
4. Place refrigeration package into mounting box and connect water lines. (See Fig. 6)
5. Water inlet is 3/8" O.D. and waste tube is 1-1/4" O.D. Contractor is to supply waste trap and service stop valve in accordance with local codes.
6. Connecting lines to be unplated copper and thoroughly flushed to remove all foreign matter before connecting to refrigeration package. The furnished strainer (Item 16) should be added to the supply line.
7. Connect the refrigeration package to the supply line service stop valve. Connect supplied fountain (internal plumbing) tubes as shown in figure 6. Remove any burrs from water tubes before inserting into fittings. (See Figs. 7 and 8) **DO NOT SOLDER TUBES INSERTED INTO THE STRAINER AS DAMAGE TO THE O-RINGS MAY RESULT.**
8. Electrical: Insure power supply is identical in voltage, hertz, and phase to that specified on the refrigeration package serial plate. Never wire compressor directly to the power supply.
9. Turn water supply on and check thoroughly for leaks.
10. Release air from tank by depressing push button; a steady stream of water assures all air is removed.
11. Re-check for leaks.
12. Stream height is factory set at 35 PSI. If supply pressure varies greatly from this, turn adjustment screw on regulator (Fig. 3). Clockwise adjustment will raise the stream height and counter-clockwise adjustment will lower stream height. For best adjustment, stream should hit basin approximately 6-1/2" from the bubbler.
13. Rotate fan blade on refrigeration package to insure proper clearance and free fan action.
14. Connect power supply.
15. Install grill using #8 x 1.00" (25mm) PH screws and small clips provided.

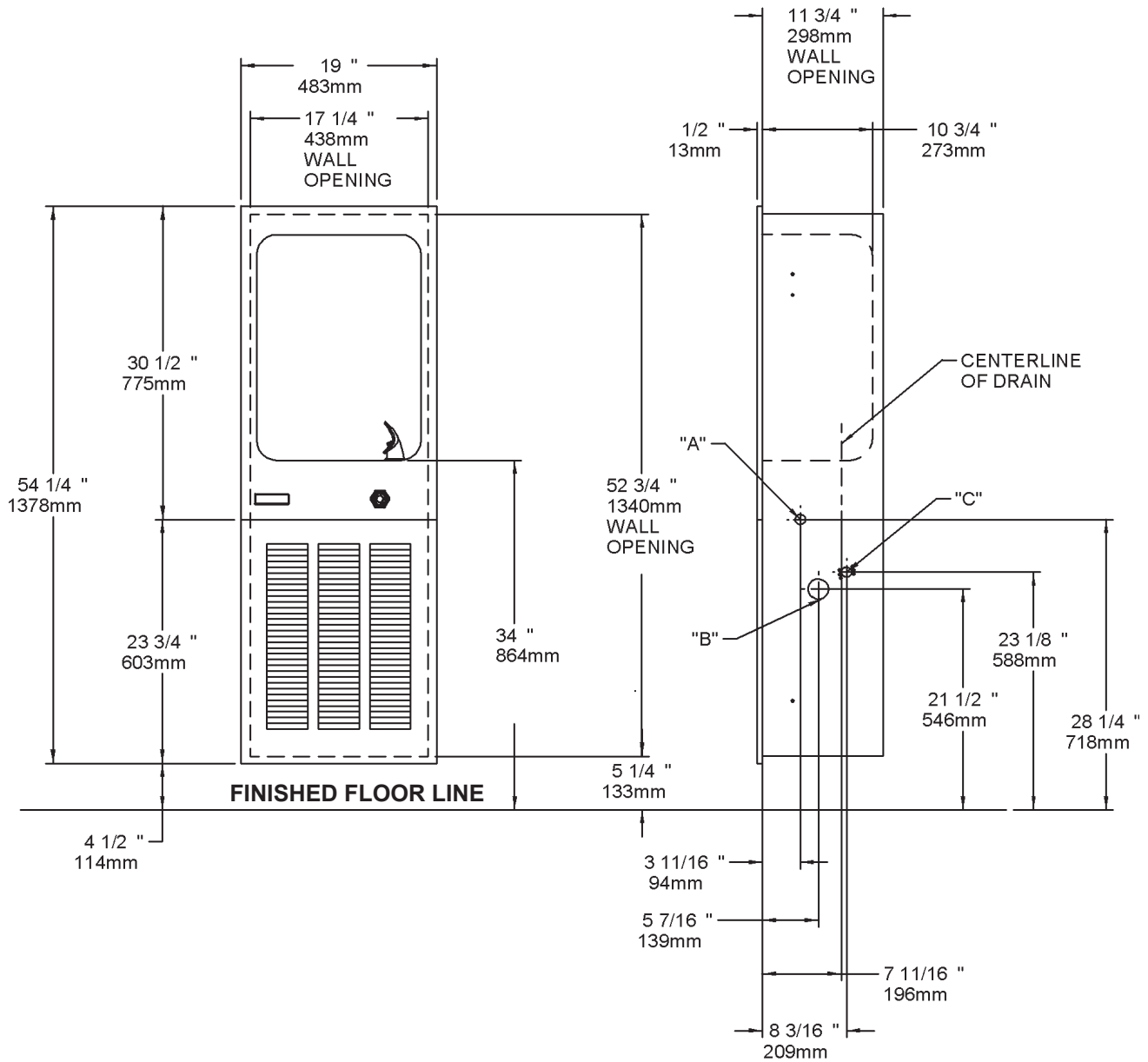
## Troubleshooting and Maintenance

1. Orifice Assy: Mineral deposits on orifice can cause water flow to spurt or not regulate. Mineral deposits may be removed from orifice with a small round file not over 1/8 diameter or a small diameter wire.

**CAUTION:** Do not file or cut orifice materials.

2. Actuation of Quick Connect Water Fittings: Cooler is provided with lead-free connectors which utilize an o-ring water seal. To remove tubing from the fitting, relieve water pressure, push in on the gray collar while pulling on the tubing (See Fig. 8). To insert tubing, push tube straight into the fitting until it reaches a positive stop, approximately 3/4".

EFRC12C\_2AWR  
**EFRCM122FKWR ROUGH-IN**



**LEGEND:**

**A = RECOMMENDED WATER SUPPLY LOCATION 3/8" O.D. UNPLATED COPPER TUBE CONNECT STUB 1-1/2" (38mm) OUT FROM WALL, SHUT OFF BY OTHERS (BOTH SIDES).**

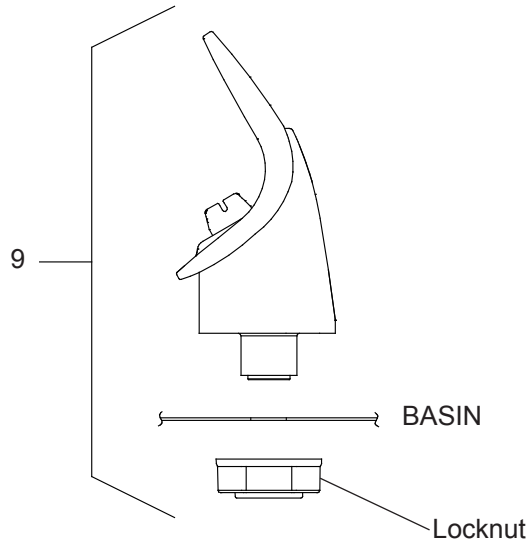
**B = RECOMMENDED LOCATION FOR WASTE OUTLET 1-1/4" O.D. DRAIN (BOTH SIDES).**

**C = ELECTRICAL SUPPLY LOCATION (BOTH SIDES).**

**NOTES:**

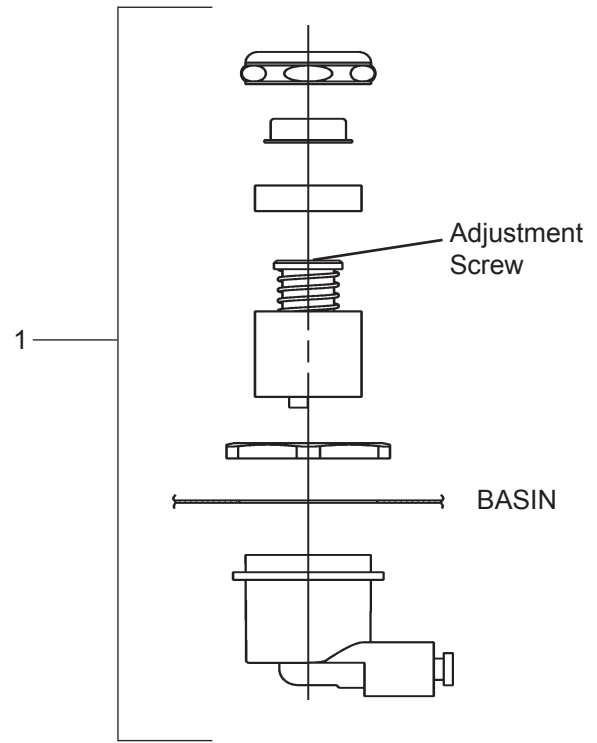
1. THERE ARE HOLES AND KNOCKOUTS PROVIDED ON EACH SIDE OF THE MOUNTING BOX THAT ARE INTENDED TO BE USED TO MOUNT THE BOX. USE SIX SCREWS OR BOLTS (NOT PROVIDED).

**Figure 1 (Rough-In)**

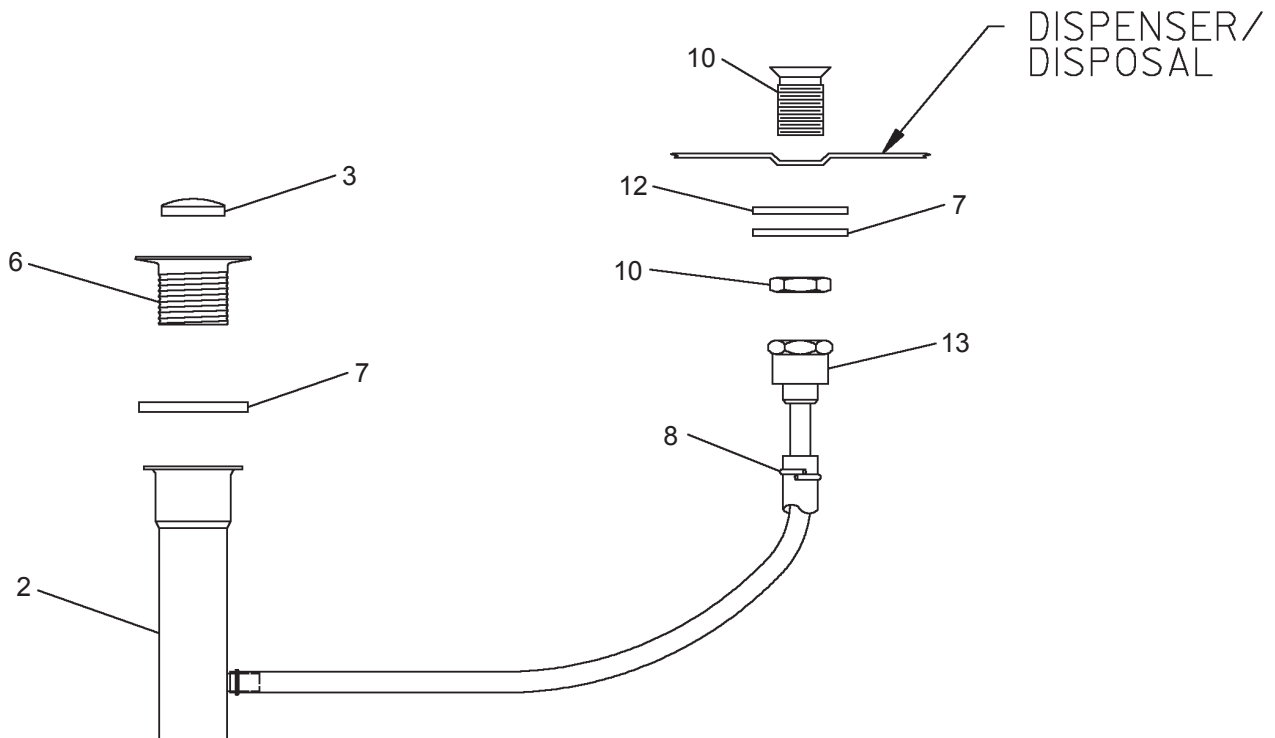


NOTE: WHEN INSTALLING REPLACEMENT BUBBLER AND PEDESTAL, TIGHTEN LOCKNUT ONLY TO HOLD PARTS SNUG IN POSITION. **DO NOT OVER TIGHTEN.**

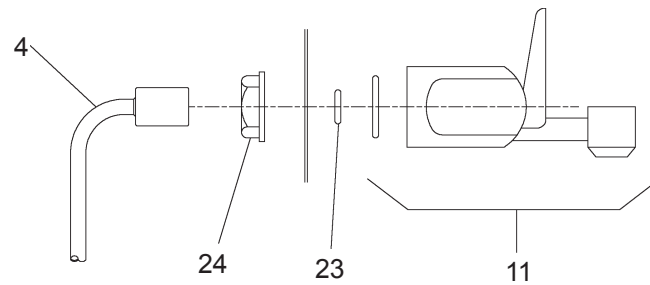
**Figure 2**



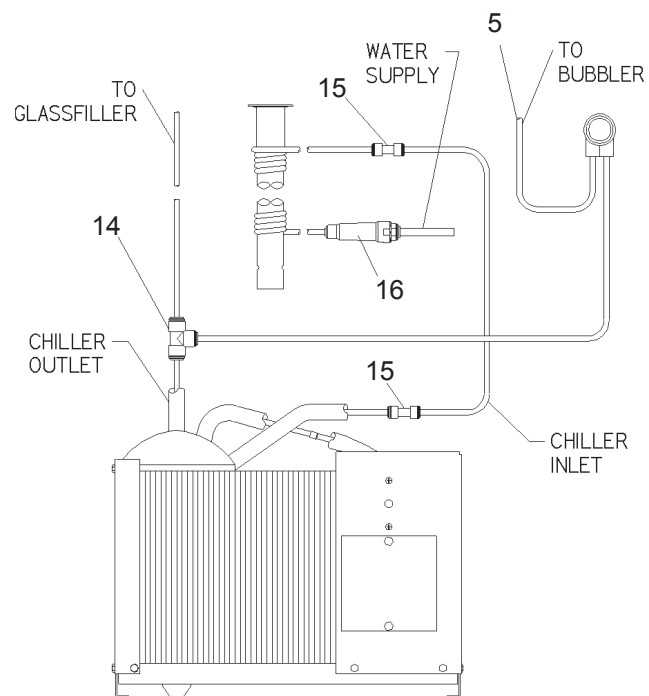
**Figure 3**



**Figure 4**



### Figure 5



### Figure 6

## Service

For proper and safe servicing, please read these instructions completely.

### DANGER

- All Service and Maintenance must be performed by an authorized service personnel.
- Disconnect electrical supply to the unit before any service work to reduce risk of electrocution.
- Shut off water supply serving the unit before any service work to reduce risk of water damage.

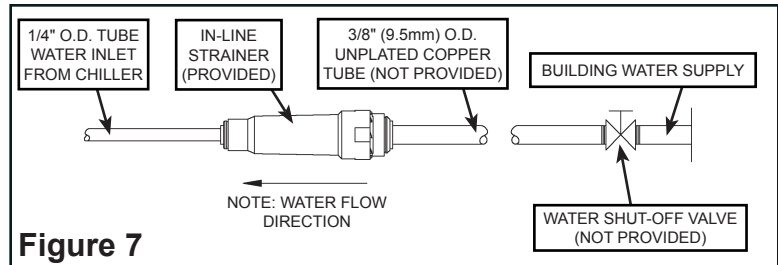
### CAUTION

- Tools/Items required but not provided, for Servicing:
  - Safety Glasses
  - Protective gloves
  - 5/16" (8mm) Hex Socket or Flathead Screwdriver
  - 3/32" (2.4mm) Hex Key

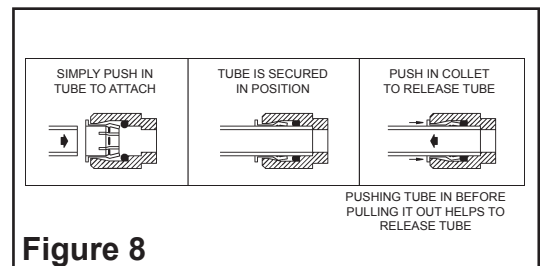
## Service: Inspection/Cleaning

- Inspect Cooler twice each year for proper operation and performance.
  - Inspection of the unit will require disconnecting electrical supply, removal of panels, etc. and reassembly and return to service practices.
1. **Cleaning:** Warm, soapy water or mild household cleaning products can be used to clean the exterior panels. Extra caution should be used to clean the mirror finished stainless steel panels. They can be easily scratched and should only be cleaned with mild soap and water or Windex glass cleaner and a clean, soft cloth. Use of harsh chemicals or petroleum based or abrasive cleaners will void the warranty.
  2. **Ventilation:** Cabinet louvers and condenser fins should be periodically cleaned with a brush, air hose or vacuum cleaner. Cleaning should be done twice each year or more frequently if needed due to environment. Excess dirt or poor ventilation can cause no cold water and compressor cycling on the compressor overload protector.
  3. **Water Flow:** Confirm proper water flow. If water flow is slow, inspect filter or inline strainer for restriction. Replace filter cartridge if required. Disassemble inline strainer and clean if required.
  4. **Actuation of Quick Connect Water Fittings:** Cooler is provided with lead-free connectors which utilize o-ring water seal. To remove tubing from the fitting, relieve water pressure, push in on the gray collar before pulling on the tubing. To insert tubing, push tube straight into fitting until it reaches a positive stop, approximately 3/4" (19mm). See Figure 8.

REPLACEMENT PARTS LIST		
ITEM NO.	PART NO.	DESCRIPTION
1	1000004196	Kit - Push Button Assy
2	40480C	Precooler
3	40038C	Strainer
4	62084C	Tube Assy - GF
5	56092C	Poly Tubing 48"(Cut to Length)
6	40619C	Ferrule
7	70151C	Gasket
8	70234C	Washer
9	1000004289	Bubbler Assy
10	40299C	Drain - 1/2"
11	1000004175	Glass Filler
12	50258C	Washer
13	61099C	Connector Assy
14	1000001994	Kit - Tee 1/4 (3 Pack)
15	1000002162	Kit - Union 1/4 (3 Pack)
16	1000004069	Strainer
17	110669443890	Screw - #10 x .63 PHSM
18	74070030	Screw - #8 x 1.00 PH
19	74070032	Speed Nut - #8
20	70567C	Clip - Speed
21	EFRCDF	Fountain - GF
22	EG23	Grill
23	31525028	O-ring
24	75580C	Locknut



**Figure 7**



**Figure 8**